

“innovation for hospital”



**INSPIRAL**

**INSPIRAL**

“innovation for hospital”

# About Us

INSPITAL is combining word of Innovation and Hospital under name of German manufacturer of high-quality Operating room solutions. INSPITAL offers the best possible operating room solutions and medical gas systems. INSPITAL products are thus found wherever outstanding innovation and quality is desired or is absolutely necessary in hospitals.

Innovation is not just a word for us, it is a DNA code that permeates all our company processes with our young and dynamic structure. We combine our innovative products with a flexible working structure and solution-oriented approach.

INSPITAL Medical Technology GmbH is located in Ratingen, Germany, close to the largest business district in North Rhine-Westphalia.

It has always been the power centre of Germany, where the medical field is increasingly at the forefront and home to international industry players.

Our operating room product group which is the heart of hospitals, consists of operating table, surgical light, pendant system, suction devices, electrosurgical device, stainless hospital furniture and modular operating room solutions. In each of our product groups, we offer innovative solutions suitable for different needs. We provide the advantage of being specialized in the operating room and being able to establish the entire infrastructure from a single source.

With our rapid growth, the INSPITAL has been involved in many projects in more than 100 countries.

Our operating room solutions reach more than 400 operating room annually. We are expanding our network day by day with our international marketing activities.

Quality is the only standard for us that we will not compromise. Quality also includes technological competence, contractual commitment, reliability and environmental protection in development, production, sales and service. Our quality management system consequently satisfies all the requirements of ISO 9001, ISO 13485, MDD 93/42/EEC, MDR (EU) 2017/745 and FDA USA.

We continue to be your partner with our Innovative solutions.  
INSPITAL pursues a strategy with a clear trajectory into the future.

# INDEX

## Cart Systems

CR

Hospital Cart	08
Hospital Cart Accessories	10
Emergency Cart	12
Nursing Cart	13
Anesthesia Cart	13
Rolling Shutter Cart	15
Triage Cart	15
Medication Cart	16
Mobile Medicine Shelf	16
Isolation Cart	17
Endoscopy Cart	17

---

## Storage & Shelf Systems

SS

ABS Modules	30
Storage and Retrieval Trolleys	36
Shelving Systems	37
Storage and Retrieval Trolleys	40
Shelving Systems	41
Medicine Box	43

---

## Hand Washing & Hygiene

HW

Cap, Bonnet and Mask Cabinet	24
Slipper Trolley	25
Mobile Hook Rails	26

---

## Stainless Steel Trolleys & Tables

ST

Mayo Table	44
Equipment Trolley	44
Open Trolley	47
Instrument Table	47
Housekeeping Trolley	48
Multipurpose Trolley	50
Nested Table Trolley	51
Medical Waste Trolley	51

---

## Hospital Accessories

HA

Examination Table	54
Hospital Screens	54
Surgeon Step Stool	55
Waste Bins and Kick Bucket	55
Bowl Trolley	55
IV Stands	56
Examination Lights	57
Instrument Trolley with Drawer	57
Hydraulic Stool	58

---



## ■ Trolleys Hospital

We design and manufacture trolleys as an essential and integrated part of the "hospital system".



## ■ Hospital Cart

There are different cart types for the health-care industry

Hospital Hospital Cart can be easily customized for different purposes as

- Emergency Cart
- Nursing Cart
- Anesthesia Cart
- Medication Cart

### Configuration

- ABS top tray, easy to clean
- Holder, easy to handle
- Color options for side walls
- Aluminum corner profiles
- Accessory rail
- Durable bumpers
- ABS base tray
- Medical grade castors



■ video





RAL 9016 White  
Code AB20.60W (6 drawers)  
Code AB20.50W (5 drawers)  
Code AB20.40W (4 drawers)



RAL 3020 Red  
Code AB20.60R (6 drawers)  
Code AB20.50R (5 drawers)  
Code AB20.40R (4 drawers)



RAL 5015 Blue  
Code AB20.60B (6 drawers)  
Code AB20.50B (5 drawers)  
Code AB20.40B (4 drawers)



RAL 6011Green  
Code AB20.60G (6 drawers)  
Code AB20.50G (5 drawers)  
Code AB20.40G (4 drawers)



RAL 1018 Yellow  
Code AB20.60Y (6 drawers)  
Code AB20.50Y (5 drawers)  
Code AB20.40Y (4 drawers)



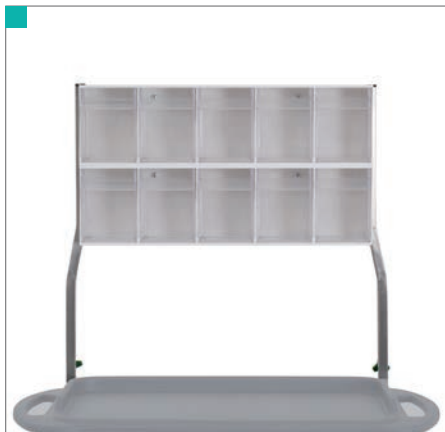
RAL 3015 Pink  
Code AB20.60P (6 drawers)  
Code AB20.50P (5 drawers)  
Code AB20.40P (4 drawers)

## Hospital Cart Accessories



IV Stand  
Ø20-620x680 H mm

Code SK00.01



Medicine Box

Code RF91.04 - 2x4, 600 mm

Code RF91.05 - 2x5, 600 mm

Code RF91.06 - 2x6, 600 mm



Defibrillator Tray - S. Steel  
315x365x250 H mm

Code SK00.02



Glove Tray - S. Steel  
150x275x100 H mm

Code SK00.03



Disposable Waste Bin  
Ø125-145 H mm

Code SK00.04



Waste Bin - S. Steel  
175x215x315 H mm

Code SK00.05



Oxygen Cylinder Holder - S. Steel  
200x150x400 H mm

Code SK00.06



Soap Dispenser- Aluminum Plastic  
210x92x330 H mm

Code SK10.13



Tissue Dispenser - S. Steel  
600x400x50 H mm

Code SK00.07



CPR Board - Compact  
650x450x8 T mm

Code SK00.08



Portable Suction Unit - Mobile 220 VAC  
180x380x300 H mm

Code SU60



Knee Push Waste Bin  
225x200x360 H mm

Code SK00.17

# Emergency Cart

## Code AB11.60

Customized for Emergency and Intensive Care.

Optimized equipment handling for immediate treatment

### Dimensions

860x620x1025 H mm

### Materials

AISI304 stainless steel

ABS worktop

Aluminum

### Configuration

**AB11. 60-** Incl. All Accessories

**AB12. 60-** Without Defibrillator

- 6 Drawers White
- Waste Bin
- Soap Dispenser
- Oxygen Cylinder Holder
- Defibrillator Tray
- IV Stand
- CPR Board
- Defibrillator
- Ambu
- Laryngoscope
- Flowmeter and Oxygen Tube



■ video

### Configuration

**AB10. 60-** Incl. All Accessories

- 6 Drawers White
- Waste Bin
- Glove Tray
- Oxygen Cylinder Holder
- Defibrillator Tray
- IV Stand
- CPR Board



Code AB10.60

## Nursing Cart

Code AB10.66

### Dimensions

860x620x980 H mm

### Materials

AISI304 stainless steel  
ABS worktop  
Aluminum

### Configuration

- Accessory rails
- Compact drawers
- Plastic drawers
- IV stand
- Waste bin
- Glove tray
- CPR board
- 6 drawers with lock
- 4 pcs castors 2 with brake
- Ø 125 mm Medical grade castors
- Basket and tray solutions for drawers



## Anesthesia Cart

Code AB10.50

### Dimensions

860x620x940 H mm

### Materials

AISI304 stainless steel  
ABS worktop  
Aluminum

### Configuration

- Accessory rails
- Plastic drawers
- Medicine boxes,
- Sharp container
- CPR board
- 6 drawers with lock
- 4 pcs castors 2 with brake
- Ø 125 mm Medical grade castors
- Basket and tray solutions for drawers



## Medicine Cart

We make the design and finish the production with the latest technology machines.

Which makes our products indispensable in the necessary departments of hospitals.

You can build the medicine cart with various configurations for every need heights from 940 to 1025 mm. Base dimensions 830x650 mm.



## Rolling Shutter Cart

### Code AB10.10

#### Dimensions

850x600x1190 H mm

#### Materials

AISI304 stainless steel  
ABS worktop  
Aluminum

#### Configuration

- Accessory rails
- Plastic drawers
- 5 trays or baskets
- CPR board
- 4 pcs castors 2 with brake
- Ø 125 mm Medical grade castors
- Rolling shutter
- Basket and tray solutions for drawers



## Triage Cart

### Code AB10.20

#### Dimensions

860x620x1060 H mm

#### Materials

AISI304 stainless steel  
ABS worktop  
Aluminum

#### Configuration

- Accessory rails
- Compact drawers
- Knee Push Waste Bin
- Glove tray
- 5 drawers with lock
- 4 pcs castors 2 with brake
- Ø 125 mm Medical grade castors
- Basket and tray solutions for drawers



## Medication Cart

Code AB40.32 - 32 Unit Dose

Code AB40.40 - 40 Unit Dose

### Dimensions

700x460x1030 H mm

### Materials

ABS worktop

Aluminum rigid mainframe

### Configuration

- 8 rows medication drawers with lock
- 4 pcs castors 2 with brake
- Ø 125 mm Medical grade castors
- 2 options with stainless steel and powder coated
- Central lock system

### Medication Cart

Code RF70.80 - Shelf 60x72 H mm

Code RF70.20 - Shelf 60x112 H mm

Code RF71.80 - Divider 80 H mm

Code RF71.20 - Divider 120 H mm



## Mobile Medicine Shelf

Code AB41.32 - 45 Unit Dose

### Dimensions

850x420x1760 H mm

### Materials

AISI304 stainless steel

ABS worktop

### Configuration

- Various options with separators and baskets
- 4 pcs castors 2 with brake
- Ø 125 mm Medical grade castors
- Functional divider drawers





## Isolation Cart

Code AB20.90

### Dimensions

780x520x1800 H mm

### Materials

Laminated compact drawers  
Aluminum rigid mainframe

### Configuration

- 9 drawers
- Functional divider drawers
- Baskets in drawers
- 4 pcs castors 2 with brake
- Ø 125 mm Medical grade castors



## Endoscopy Cart

Code AB30.00 -Full  
Code AB30.01- Without Baskets

### Dimensions

780x520x1700 H mm

### Materials

Laminated compact drawers  
Aluminum rigid mainframe

### Configuration

- Stock control possibility at any moment thanks to the glass doors
- In the full cabinet, there are;
  - 2 pcs ABS basket 600x400x200 H mm
  - 5 pcs ABS tray 600x400x100 H mm
  - 3 pcs ABS tray 600x400x50 H mm
- 4 pcs castors 2 with brake
- Ø 125 mm Medical grade castors



AB30.00



## ■ Hand washing units

Available in various sizes. Customised design, planning and consultation on request.

## ■ Faucets

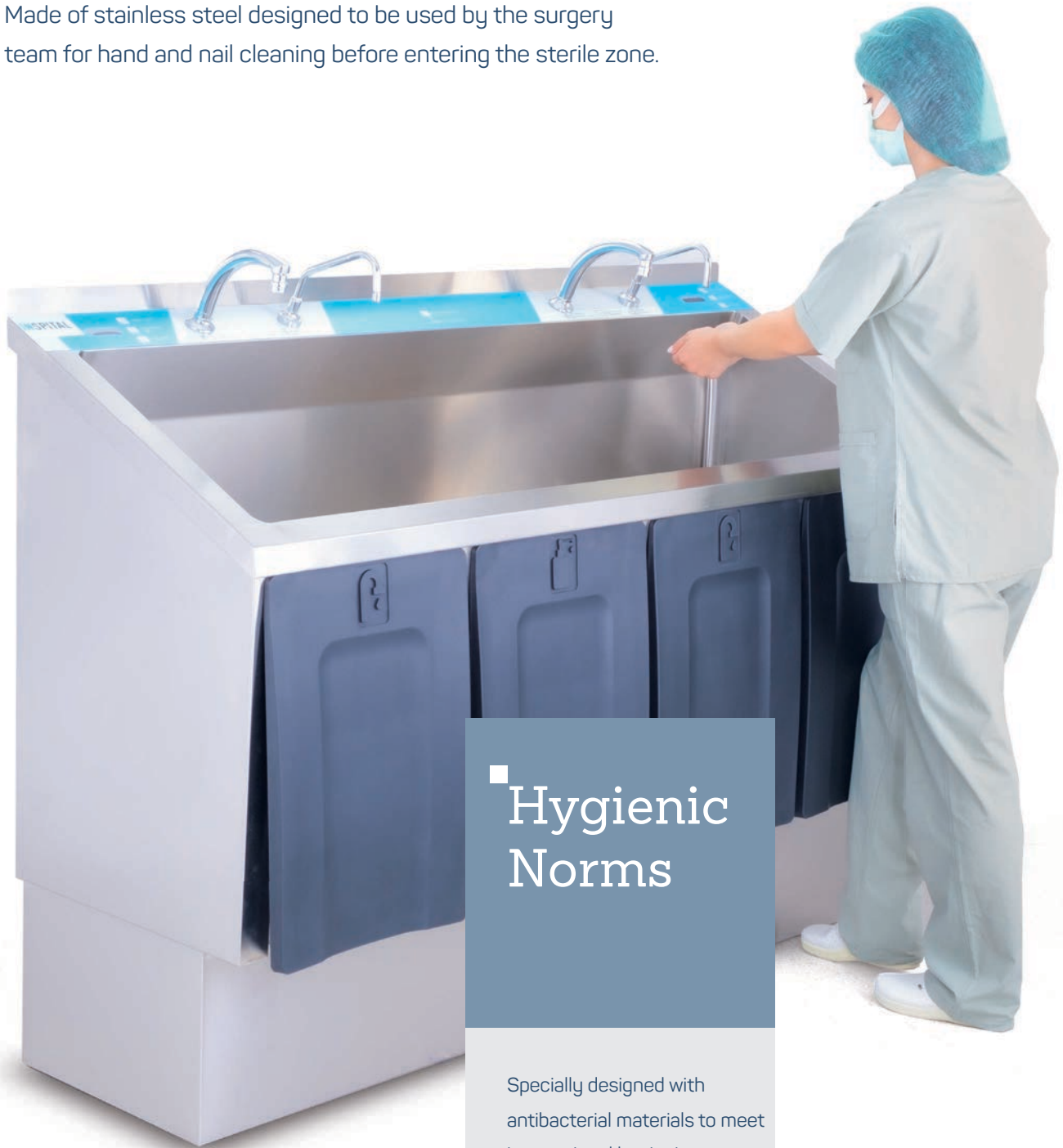
Water and soap taps are designed in accordance with hygiene standards. High quality chrome plating is used for long lifetime.





# ■ Scrub Sinks

Made of stainless steel designed to be used by the surgery team for hand and nail cleaning before entering the sterile zone.



## ■ Hygienic Norms

Specially designed with antibacterial materials to meet international hygienic norms



■ video



**Control**

Photocell and knee controlled water flow and knee controlled soap flow at each station



**Grill**

Special design grid system that minimises water splashes



**Contact**

Special design polyurethane knee control which makes the touch more comfortable

**Photocell**

Photocell display screen that shows the temperature and duration of water alternatively from each faucet





**Sink**

Designed to prevent splash during washing  
Easy to clean, hygienic surfaces



Water Temperature



Timer



Photocell

Water temperature and timer can be monitored on LCD display



## Scrub Sinks

Code SK60.10 -Single

### Dimensions

800x365x1180 H mm

### Materials

AISI304 stainless steel  
Polyurethane

### Configuration

- Soap dispenser and photocell
- Polyurethane knee controlled
- Grid system preventing splashing
- Photocell display screen that shows the temperature and duration of water alternatively from each faucet
- Thermostatic mixing valve for cold and hot water
- Designed with round concave corners for easy to clean



## Scrub Sinks

Code SK60.20 -Double

Code SK60.30 -Triple

### Dimensions

1600x365x1180 H mm

2200x365x1180 H mm

### Materials

- AISI304 stainless steel
- Polyurethane

### Configuration

- Soap dispenser and photocell
- Polyurethane knee controlled
- Grid system preventing splashing
- Photocell display screen that shows the temperature and duration of water alternatively from each faucet
- Thermostatic mixing valve
- Round concave corners



## Cap, Bonnet and Mask Cabinet

Code DP40.40-Single

### Dimensions

655x420x1560 H mm

### Materials

- AISI304 stainless steel

### Configuration

- Separate divisions for clean caps, bonnets, masks etc
- Cabinet for used items
- Adjustable rubber feet



### Area of use

Designed to use at the entrance of operating rooms and ICU's





## Slipper Trolley

Code RF10.60

### Dimensions

995x565x1825 H mm

### Materials

- AISI304 stainless steel

### Configuration

- 24 pairs of slipper capacity
- 4 pcs castors 2 with brake
- Ø 75 mm Castors



Our experts are ready to offer you the most suitable solutions.



## Mobile Hook Rail, Orthopedic Type

Code AB90.30-Complete set

### Dimensions

600x500x1700 H mm

### Materials

- AISI304 stainless steel

### Configuration

- Hook Trolley, 1 pc
- Basket, Small, 1 pc
- Basket, Large, 2 pcs
- 4 pcs castors 2 with brake
- Ø 75 mm Castors



## Mobile Hook Rail, Anaesthetic Type

Code AB90.40-Complete set

### Dimensions

600x800x1700 H mm

### Materials

- AISI304 stainless steel

### Configuration

- Hook Trolley, 1 pc
- Basket, Small, 2 pcs
- Basket, Large, 4 pcs
- 4 pcs castors 2 with brake
- Ø 75 mm Castors



## Mobile Hook Rail, Operating Type

Code AB90.50-Complete set

### Dimensions

600x500x1700 H mm

### Materials

- AISI304 stainless steel

### Configuration

- Hook Trolley, 1 pc
- Basket, Small, 1 pc
- Basket, Large, 1 pc
- Multi-purpose Shelf 1 pc
- Suture Tray 1 pc
- 4 pcs castors 2 with brake
- Ø 75 mm Castors



## Wall Mounted Hook Rail, General Type

Code RF10.50-Complete set

### Dimensions

600x600x1700 H mm

### Materials

- AISI304 stainless steel

### Configuration

- Hook Trolley, 1 pc
- Suture Tray, 1 pc
- Basket, Small, 1 pc
- Medicine Box, 1 pc
- Multi-purpose Shelf 1 pc





## Wall and Mobile Type

Trolley and shelves,  
wall-mounted and mobile  
It consists entirely of 304  
quality stainless steel, which  
can be modulated with various  
accessories that can be used  
in all units of the hospital



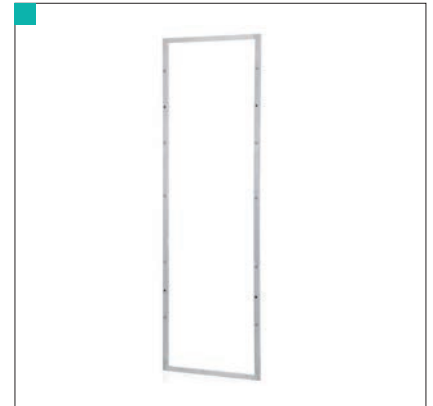
Double Sided  
600x700x1700 H mm

Code AB90.10



Single Sided  
600x500x1700 H mm

Code AB90.20



Hook Rail Wall Mounted  
600x600x1700 H mm

Code AB90.00



Sterile Goods Basket  
600x300x200 H mm -- Small  
600x350x300 H mm -- Large  
Code RF40.30-35



Suture Storage  
600x136x290 H mm

Code RF00.30



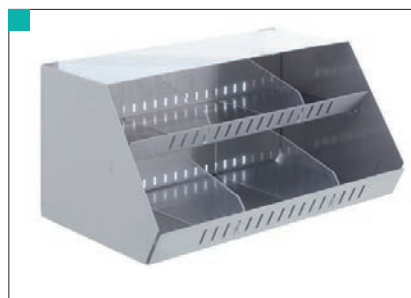
Multi-purpose Barrier Storage  
600x360x170 H mm

Code RF00.40



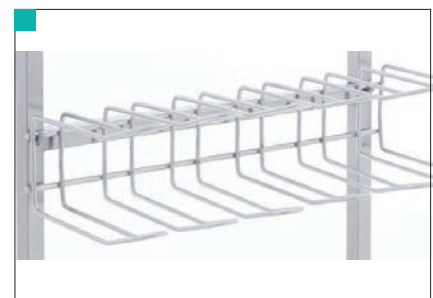
Multi-purpose Storage  
600x310x255 H mm

Code RF00.50



Cap - Bonnet Storage  
600x340x380 H mm

Code RF00.60



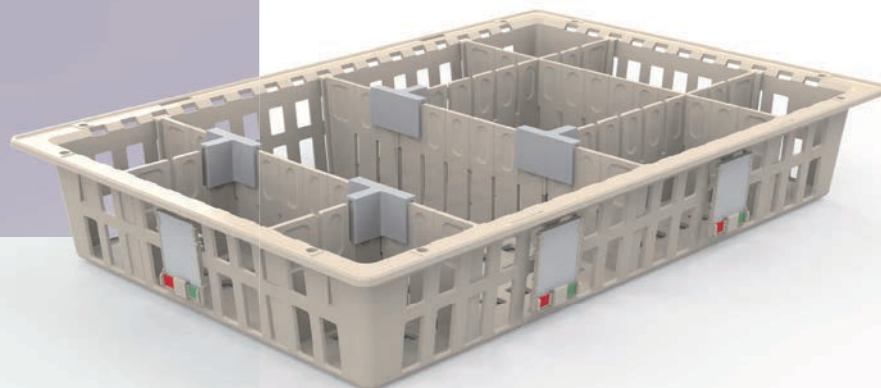
Shoe Holder  
600x237x115 H mm

Code RF00.80

## ■ ABS Modules and Baskets, 600 × 400 mm

### HYGIENIC

ABS/Polycarbonate plastic trays and baskets are easy to clean



## ■ Features

Offers the largest range of ISO 60-40 trays and baskets sized 60x40cm in different heights

Cream color modules ABS

Clear plastic modules Polycarbonate



■ video

## SPECIFICATIONS AND BENEFITS

### DURABLE

Baskets can carry up to 40 kg

### SPACE-SAVING

Maximum storage capacity for various size items

### DIVIDER LOCK

Lock system prevents dividers from moving under heavy load



### LABEL HOLDERS

All items can be easily organized thanks to labels on the edge or at the front of baskets



**20 cm Basket****Dimensions**

600x400x200 H mm

**Materials**

- ABS Plastic

Code RF30.20

**10 cm Basket****Dimensions**

600x400x100 H mm

**Materials**

- ABS Plastic

Code RF30.10

**5 cm Basket****Dimensions**

600x400x50 H mm

**Materials**

- ABS Plastic

Code RF30.05

**20 cm Tray****Dimensions**

600x400x200 H mm

**Materials**

- ABS Plastic

Code RF20.20

**10 cm Tray****Dimensions**

600x400x100 H mm

**Materials**

- ABS Plastic

Code RF20.10

**5 cm Tray****Dimensions**

600x400x50 H mm

**Materials**

- ABS Plastic

Code RF20.05





### 20 cm Short and Long Dividers

#### Dimensions

400x200 H mm - Short  
600x200 H mm -Long

#### Materials

- ABS Plastic

Code RF60.20-RF61.20



### 10 cm Short and Long Dividers

#### Dimensions

400x100 H mm - Short  
600x100 H mm -Long

#### Materials

- ABS Plastic

Code RF60.10-RF61.10



### 5 cm Short and Long Dividers

#### Dimensions

400x50 H mm - Short  
600x50 H mm -Long

#### Materials

- ABS Plastic

Code RF60.05-RF61.05



### Cover

#### Dimensions

400x200x10 H mm - Short

#### Materials

- ABS Plastic

Code RF40.01



### Side Panel

#### Dimensions

400x600 H mm - Short  
600x400 H mm -Long

#### Materials

- ABS Plastic

Code RF80.40-RF80.60



### Label Holder and Shelf Divider

#### Dimensions

58x33 H mm Bracket  
45x62 H mm Tag holder

#### Materials

- Plastic

Code RF01.03-RF01-04

**20 cm Basket****Dimensions**

600x400x200 H mm

**Materials**

- Polycarbonate

Code RF32.20

**10 cm Basket****Dimensions**

600x400x100 H mm

**Materials**

- Polycarbonate

Code RF32.10

**5 cm Basket****Dimensions**

600x400x50 H mm

**Materials**

- Polycarbonate

Code RF32.05

**20 cm Tray****Dimensions**

600x400x200 H mm

**Materials**

- Polycarbonate

Code RF22.20

**10 cm Tray****Dimensions**

600x400x100 H mm

**Materials**

- Polycarbonate

Code RF22.10

**5 cm Tray****Dimensions**

600x400x50 H mm

**Materials**

- Polycarbonate

Code RF22.05



### 20 cm Short and Long Dividers

#### Dimensions

400x200 H mm - Short  
600x200 H mm -Long

#### Materials

- Polycarbonate

Code RF64.20-RF65.20



### 10 cm Short and Long Dividers

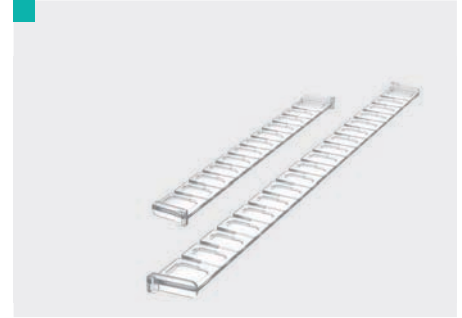
#### Dimensions

400x100 H mm - Short  
600x100 H mm -Long

#### Materials

- Polycarbonate

Code RF64.10-RF65.10



### 5 cm Short and Long Dividers

#### Dimensions

400x50 H mm - Short  
600x50 H mm -Long

#### Materials

- Polycarbonate

Code RF64.05-RF65.05



### Wire Basket

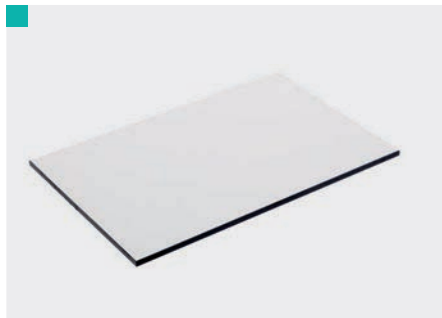
#### Dimensions

600x400x50 H mm  
600x400x100 H mm  
600x400x200 H mm

#### Materials

- S. Steel

Code RF40.05, RF40.10, RF40. 20



### Compact Shelf

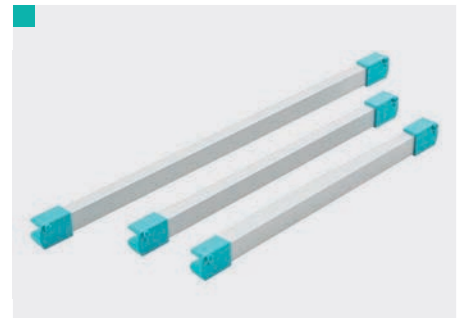
#### Dimensions

600x400x10 H mm

#### Materials

- Compact

Code RF45.10



### Shelf Rail

#### Dimensions

695x30 H mm Long (angle)  
620x30 H mm Long (flat)  
495x30 H mm Short (angle)  
420x30 H mm Short (flat)

#### Materials

- S. Steel

Code RF50.95, RF50.20,  
RF55.95, RF55.95

# Storage and Retrieval Trolleys

Storage Trolley and Retrieval Trolley are designed for hygienic storage of laundry, treatment equipment, consumables, durable equipment and transport to different units within the clinic when required.

- Designed for modular baskets in various height and depth
- 4 castors for maximum mobility, includes a brake system
- Designed for hanging rails for adjustable angle
- Easy cleaning



## Shelving Systems Long Edge Type, Full

### Dimensions

Code RF22.91 - 660x450x1760 H mm - Single  
Code RF22.92 - 1320x450x1760 H mm - Double  
Code RF22.93 - 1965x450x1760 H mm - Triple  
Code RF22.94 - 2610x450x1760 H mm - Quad

### Materials

- AISI304 stainless steel
- ABS Plastic

### Configuration

- Various options with separators and baskets
- Functional divider drawers
- Re-organization of space by the dividers
- Rail break system for safe stop of telescopic rails
- Dimensions specifically designed for healthcare use
- 4 pcs castors 2 with brake
- Ø 125 mm Medical grade castors



## Shelving Systems Long Edge Type, Null

### Dimensions

Code RF23.91 - 660x450x1760 H mm - Single  
Code RF23.92 - 1320x450x1760 H mm - Double  
Code RF23.93 - 1965x450x1760 H mm - Triple  
Code RF23.94 - 2610x450x1760 H mm - Quad

### Materials

- AISI304 stainless steel

### Configuration

- Dimensions specifically designed for healthcare use
- 4 pcs castors 2 with brake
- Ø 125 mm Medical grade castors



## Shelving Systems Short Edge Type, Null

### Dimensions

Code RF24.91 - 475x650x1760 H mm - Single  
 Code RF24.92 - 920x650x1760 H mm - Double  
 Code RF24.93 - 1365x650x1760 H mm - Triple  
 Code RF24.94 - 1810x650x1760 H mm - Quad

### Materials

- AISI304 stainless steel
- ABS Plastic

### Configuration

- Various options with separators and baskets
- Functional divider drawers
- Re-organization of space by the dividers
- Rail break system for safe stop of telescopic rails
- Dimensions specifically designed for healthcare use
- 4 pcs castors 2 with brake
- Ø 125 mm Medical grade castors



## Shelving Systems Short Edge Type, Null

### Dimensions

Code RF25.91 - 475x650x1760 H mm - Single  
 Code RF25.92 - 920x650x1760 H mm - Double  
 Code RF25.93 - 1365x650x1760 H mm - Triple  
 Code RF25.94 - 1810x650x1760 H mm - Quad

### Materials

- AISI304 stainless steel

### Configuration

- Dimensions specifically designed for healthcare use
- 4 pcs castors 2 with brake
- Ø 125 mm Medical grade castors



## High density storage

Designed to store sterile or non-sterile drugs and medical devices, whether packaged or not. ISO 600x400 size trays are compatible to any inventory system and is particularly suitable for empty/full workflows



# Storage and Retrieval Trolleys

Storage Trolley and Retrieval Trolley are designed for hygienic storage of laundry, treatment equipment, consumables, durable equipment and transport to different units within the clinic when required.

- Designed for modular baskets in various height and depth
- 4 castors for maximum mobility, includes a brake system
- Standard material is plastic coated steel
- Designed for hanging rails for adjustable angle
- Easy cleaning





## Shelving Systems with Baskets & Trays

### Dimensions

- Code RF26.91 - 675x460x1810 H mm - Single
- Code RF26.92 - 1320x460x1810 H mm - Double
- Code RF26.93 - 1965x460x2000 H mm - Triple
- Code RF26.94 - 2610x460x2000 H mm - Quad

### Materials

- AISI304 stainless steel
- ABS Plastic

### Configuration

- Stainless steel frame for durability and easy cleaning
- Adjustable shelf angles
- Modular structure to build different size solution
- Various options with separators and baskets
- Functional dividers for drawers
- Re-organization of space by the dividers
- Rail break system for safe stop of telescopic rails
- Dimensions specifically designed for healthcare use
- Ø 100mm Castors



## Shelving Systems with Baskets & Trays

### Dimensions

- Code RF27.91 - 675x460x1810 H mm - Single
- Code RF27.92 - 1320x460x1810 H mm - Double
- Code RF27.93 - 1965x460x2000 H mm - Triple
- Code RF27.94 - 2610x460x2000 H mm - Quad

### Materials

- AISI304 stainless steel
- ABS Plastic

### Configuration

- Stainless steel frame for durability and easy cleaning
- Adjustable shelf angles
- Modular structure to build different size solution
- Various options with separators and baskets
- Functional divider drawers
- Re-organization of space by the dividers
- Rail break system for safe stop of telescopic rails
- Dimensions specifically designed for healthcare use
- Ø 100mm Castors



## Shelving Systems Null + Shelves

### Dimensions

Code RF28.91 - 675x460x1810 H mm - Single  
 Code RF28.92 - 1320x460x1810 H mm - Double  
 Code RF28.93 - 1965x460x2000 H mm - Triple  
 Code RF28.94 - 2610x460x2000 H mm - Quad

### Materials

- AISI304 stainless steel
- ABS Plastic

### Configuration

- Stainless steel frame for durability and easy cleaning
- Adjustable shelf angles
- Modular structure to build different size solution
- Re-organization of space by the dividers
- Rail break system for safe stop of telescopic rails
- Dimensions specifically designed for healthcare use
- Ø 100mm Castors



## Shelving Systems Null

### Dimensions

Code RF29.91 - 675x460x1810 H mm - Single  
 Code RF29.92 - 1320x460x1810 H mm - Double  
 Code RF29.93 - 1965x460x2000 H mm - Triple  
 Code RF29.94 - 2610x460x2000 H mm - Quad

### Materials

- AISI304 stainless steel
- ABS Plastic

### Configuration

- Stainless steel frame for durability and easy cleaning
- Adjustable shelf angles
- Modular structure to build different size solution
- Re-organization of space by the dividers
- Rail break system for safe stop of telescopic rails
- Dimensions specifically designed for healthcare use
- Ø 100mm Castors





## Modular

Designed to store sterile or non-sterile drugs and medical devices, whether packaged or not. ISO 600x400



## Medicine Box

### Dimensions

Code RF90.04 - 600x168x206 H mm - 4

Code RF90.05 - 600x133x165 H mm - 5

Code RF90.06 - 600x92x114 H mm - 6

### Materials

- Polystyrene

### Configuration

- Temperature resistance (-20° to +80°)
- Made of impact resistant polystyrene
- Hand grip and anti-tilt for easy use
- Hygienic and more comfortable.



## Mayo Tables

Is one of the products used in the most sensitive points inside the operating room

- Various sizes
- High load capacity
- Manouverable and safe
- 3 wheels, maximum stability



■ video

## Mayo Table Hydraulic

Code MS10.51

### Dimensions

735x540x765-1155 H mm

### Materials

- AISI304 stainless steel

### Configuration

- Concave corners for easy cleaning
- Rotating top tray
- Hydraulic height adjustment by the foot pedal
- 3 pcs castors 2 with brake
- Ø 75 mm Castors



## Mayo Table Mechanic

Code MS10.50

### Dimensions

740x540x1000-1420 H mm

### Materials

- AISI304 stainless steel

### Configuration

- Concave corners for easy cleaning
- Rotating top tray
- Mechanical height adjustment
- Bumpers on both castors
- 3 pcs castors 2 with brake
- Ø 75 mm Castors



## Mayo Table Hydraulic

Code MS10.54

### Dimensions

700x1100x980-1450 H mm

### Materials

- AISI304 stainless steel

### Configuration

- Concave corners for easy cleaning
- Rotating top tray
- Hydraulic height adjustment by the foot pedal
- Two-tiered table
- 4 pcs castors 2 with brake
- Ø 100 mm Castors



## Equipment Trolley

Code AB62.20- Double Shelf

Code AB62.21- Triple Shelf

Code AB62.10- Medicine Box and Drawer

### Dimensions

870x550x910 H mm

### Materials

- AISI304 stainless steel

### Configuration

- Designed to be used in operating and intervention rooms
- Handles in both sides for easy to move
- Bumpers on both castors
- 4 pcs castors 2 with brake
- Ø 100mm Castors
- Integrated 6 fold medicine boxes
- Integrated ABS tray



AB62.20



AB62.10



AB62.21

## Open Trolley

Code AB10.30

### Dimensions

640x520x940 H mm

### Materials

- AISI304 stainless steel
- ABS Plastic

### Configuration

- Stainless steel frame for durability and easy cleaning
- With fixed stainless steel top shelf, 4 adjustable ABS trays
- Re-organization of space by the dividers
- Rail break system for safe stop of telescopic rails
- Dimensions specifically designed for healthcare use
- 4 pcs castors 2 with brake
- Ø 100mm Castors



## Instrument Trolley

Code AB00.21

Code AB00.22

Code AB00.23

### Dimensions

900x650x850 H mm

700x550x850 H mm

800x600x850 H mm

### Materials

- AISI304 stainless steel

### Configuration

- Designed for operating and intervention rooms
- Curved corners
- 2 shelves
- Bumpers on both castors
- 4 pcs castors 2 with brake
- Ø 75 mm Castors



## Housekeeping Trolley

Single, double and triple basket alternatives are available for different departments of the hospital

- Durable base tray to support the weight of larger bags
- Different lid color options for each basket
- Hygienic no-touch lid opening by foot pedal





## Housekeeping Trolley

Code AB90.99

### Dimensions

1000x440x950 H mm

### Materials

- AISI304 stainless steel
- ABS Plastic

### Configuration

- Options: single, double, triple bags
- Metal foot pedals to open the lids
- Specially designed clips for to hold plastic bags
- Options for lid colors
- 4 pcs castors 2 with brake
- Ø 75 mm Castors



- Options for lid colors



## Housekeeping Trolley

Code AB90.97

Code AB90.98

### Dimensions

400x440x950 H mm

700x440x950 H mm

### Materials

- AISI304 stainless steel
- ABS Plastic

### Configuration

- Metal foot pedals to open the lids
- Specially designed clips for to hold plastic bags
- Options for lid colors
- 4 pcs castors 2 with brake
- Ø 75 mm Castors



AB90.98

AB90.97

## Multipurpose Trolley

Code AB10.31

### Dimensions

1200x500x940 H mm

### Materials

- AISI304 stainless steel
- ABS Plastic

### Configuration

- Metal foot pedals to open the lids
- Waste section
- With fixed stainless steel top shelf, 5 adjustable ABS trays
- Re-organization of space by the dividers
- Rail break system for safe stop of telescopic rails
- Dimensions specifically designed for healthcare use
- 4 pcs castors 2 with brake
- Ø 75 mm Castors



## Drawer Trolley

Code AB10.32

### Dimensions

880x500x610 H mm

### Materials

- AISI304 stainless steel
- ABS Plastic

### Configuration

- Metal foot pedals to open the lids
- Specially designed clips for to hold plastic bags
- Functional 3 drawers
- Options for lid colors
- Push handle
- 4 pcs castors 2 with brake
- Ø 75 mm Castors



## Nested Table Trolley

Code AB00.10

Code AB00.11

Code AB00.12

Code AB00.13

### Dimensions

1100x550x1000 H mm

1000x500x950 H mm

900x450x900 H mm

800x400x850 H mm

### Materials

- AISI304 stainless steel

### Configuration

- Nested type, space efficient storage
- 4 pcs castors 2 with brake
- Ø 75 mm Castors



## Medical Waste Trolley

Code AB00.50

### Dimensions

1225x610x960 H mm

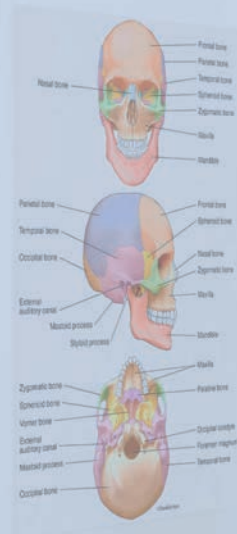
### Materials

- AISI304 stainless steel

### Configuration

- Made of stainless steel to be used in operating and intervention rooms
- 345 L internal capacity with integrated relief valve at the bottom
- 2 doors on top surface
- 4 pcs castors 2 with brake
- Ø 100mm Castors





Stainless Steel Hospital Furniture

## ■ Examination And Treatment Areas

Available in various sizes. Customised design. Planning and consultation on request.

We offer you solutions for examination rooms and treatment areas

## Examination Table

Code SK00.62

### Dimensions

1800x600x800 H mm

### Materials

- AISI304 stainless steel
- Antibacterial leather coated foam

### Configuration

- Adjustable head section
- Foldable legs
- Adjustable rubber feet



## Hospital Screens

Code SK00.60 - 3 Panel

Code SK00.61 - 4 Panel

### Dimensions

1860x380x1700H mm

2500x380x1700H mm

### Materials

- PVC and Fabric Panel options with electrostatic painted frame

### Configuration

- 3 panel or 4 panel foldable screen options
- Mobile, easy to move system
- 10 pcs castors
- Ø 75 mm Castors



## Surgeon Step Stool

Code BS10.10-11-20

### Dimensions

- 600x350x180H mm - Single
- 600x350x260H mm - Single
- 600x560x400H mm - Double

### Materials

- AISI304 stainless steel

### Configuration

- Non-slip, wide surface for easy use



## Waste Bins and Kick Bucket

Code BS90.01-02-03

### Dimensions

- 350x350H mm - 20 L
- 530x530H mm - 50 L
- 400x200H mm - No Lid

### Materials

- AISI304 stainless steel

### Configuration

- Lid and carriage handle (AB90.01, AB90.02)
- Rubber coated metal bumper
- Optional MR compatibility
- 4 pcs castors 2 with brake
- Ø 75 mm Castors



## Bowl Trolley

Code BS90.04-05

### Dimensions

- 350x350x850H mm - Single
- 700x350x850H mm - Double

### Materials

- AISI304 stainless steel

### Configuration

- 2 options with single or double bowl, bottom tray
- Optional MR compatibility
- 4 pcs castors 2 with brake
- Ø 75 mm Castors



## IV Stands

Stainless Steel

Practical Hooks to Use

Height adjustment



video

## IV Stands

Code SR10.70 Turquoise Color

Code SR10.71 Anthracite Color

### Dimensions

590xMIN-1200 x MAX - 2100 Hmm

### Materials

- AISI304 stainless steel
- Plastic

### Configuration

- Hook height can be adjusted between 1200-2100 mm
- 4 hooks to hang IV
- Infusion devices mountable body structure
- 2 options with plastic or chrome plated star base
- 5 pcs castors 2 with brake
- Ø 50 mm Castors





## Examination Lights

Code LD02.05

### Dimensions

1100 H mm

### Materials

- AISI304 stainless steel, Plastic

### Configuration

- Advanced LED technology to fulfill lighting requirements of any kind of minor surgeries and examinations
- Well-focused LED light thanks to the specially designed reflector system
- Maintenance free LED technology
- Easily accessible on/off switch and 5-level dimming function

### Configuration

- |                                 |                    |
|---------------------------------|--------------------|
| · Illumination                  | 30.000 Lux / 0,4 m |
| · Light head diameter           | Ø150 mm            |
| · LED lifetime                  | LED lifetime       |
| · Color rendering index, Ra CRI | 95%                |
| · Number of LED modules         | 6                  |
| · Color temperature             | 4500 K             |



## Instrument Trolley with Drawer

Code AB00.30

### Dimensions

450x480x890 H mm

### Materials

- AISI304 stainless steel

### Configuration

- 1 drawer and 2 trays with barriers
- Bumpers on both casters
- 4 pcs castors 2 with brake
- Ø 75 mm Castors



## Hydraulic Stool

Code TB10.60-TB30.60-TB50.70

### Dimensions

340x560 Hmm Plastic Base Hand Controlled  
 340x560Hmm Chromed Base Hand Controlled  
 340x560 Hmm Chromed Base Foot Controlled

### Materials

- PU seat, Plastic

### Configuration

- Hydraulic height adjustment
- Reinforced and chrome plated star base options, Ergonomic
- Optional lower stools with min 560 mm and max 750 mm heights
- 5 pcs castors, Ø 50 mm Castors



## Hydraulic Stool

Code TB10.55-TB30.55-TB60.70

### Dimensions

340x560 Hmm Plastic Base Hand Controlled  
 340x560Hmm Chromed Base Hand Controlled  
 340x560 Hmm Chromed Base Foot Controlled

### Materials

- PU seat, Plastic

### Configuration

- Hydraulic height adjustment
- Reinforced and chrome plated star base options, Ergonomic
- Optional lower stools with min 560 mm and max 750 mm heights
- 5 pcs castors, Ø 50 mm Castors



## Hydraulic Stool

Code TB20.60-TB40.60-TB70.70

### Dimensions

440x560 Hmm Plastic Base Hand Controlled  
 440x560Hmm Chromed Base Hand Controlled  
 440x560 Hmm Chromed Base Foot Controlled

### Materials

- PU seat, Plastic

### Configuration

- Hydraulic height adjustment
- Reinforced and chrome plated star base options, Ergonomic
- Optional lower stools with min 560 mm and max 750 mm heights
- 5 pcs castors, Ø 50 mm Castors



## Hydraulic Stool

Code TB20.55-TB40.55-TB80.70

### Dimensions

420x560 Hmm Plastic Base Hand Controlled  
 420x560 Hmm Chromed Base Hand Controlled  
 420x560 Hmm Chromed Base Foot Controlled

### Materials

- PU seat, Plastic

### Configuration

- Hydraulic height adjustment
- Reinforced and chrome plated star base options, Ergonomic
- Optional lower stools with min 560 mm and max 750 mm heights
- 5 pcs castors, Ø 50 mm Castors



## Hydraulic Stool

Code TB80.80

### Dimensions

440 x560 Hmm Plastic Base Hand Controlled

### Materials

- PU seat, Plastic, Metal

### Configuration

- Hydraulic height adjustment
- Reinforced and chrome plated star base options, Ergonomic
- Optional lower stools with min 525 mm and max 700 mm heights



## Hydraulic Stool

Code TB80.90

### Dimensions

340x560 Hmm Plastic Base Hand Controlled

### Materials

- PU seat, Plastic, Metal

### Configuration

- Hydraulic height adjustment
- Reinforced and chrome plated star base options, Ergonomic
- Optional lower stools with min 760 mm and max 885 mm heights



# INSPI TAL

“innovation for hospital”

INSPI TAL MEDICAL  
TECHNOLOGY GmbH

Kaiserswerther Str. 83B,  
40878 Ratingen / Germany

+49 (2102) 939 46 94

info@inspital.com

www.inspital.com



Website



Youtube



Linkedin



Instagram