

“innovation for hospital”



**INSPIRAL**



**INSPI TAL**

“innovation for hospital”

# About Us

Inspital is combining word of Innovation and Hospital under name of German manufacturer of high-quality Operating room solutions. Inspital offers the best possible operating room solutions and medical gas systems. Inspital products are thus found wherever outstanding innovation and quality is desired or is absolutely necessary in hospitals.

Innovation is not just a word for us, it is a DNA Model that permeates all our company processes with our young and dynamic structure. We combine our innovative products with a flexible working structure and solution-oriented approach.

Inspital Medical Technology GmbH is located in Ratingen, Germany, close to the largest business district in North Rhine-Westphalia. It has always been the power centre of Germany, where the medical field is increasingly at the forefront and home to international industry players.

Our operating room product group which is the heart of hospitals, consists of operating table, surgical light, pendant system, suction devices, electrosurgical device, stainless hospital furniture and modular operating room solutions. In each of our product groups, we offer innovative solutions suitable for different needs. We provide the advantage of being specialized in the operating room and being able to establish the entire infrastructure from a single source.

With our rapid growth, the Inspital has been involved in many projects in more than 100 countries. Our operating room solutions reach more than 400 operating room annually. We are expanding our network day by day with our international marketing activities.

Quality is the only standard for us that we will not compromise. Quality also includes technological competence, contractual commitment, reliability and environmental protection in development, production, sales and service. Our quality management system consequently satisfies all the requirements of ISO 9001, ISO 13485, MDD 93/42/EEC, MDR (EU) 2017/745 and FDA USA.

We continue to be your partner with our Innovative solutions.  
Inspital pursues a strategy with a clear trajectory into the future.



# INDEX

## Operating Lights



## Medical Pendant Systems



Operating Lights	05
Medical Imaging Workstation	14
Examination Lights	15

Pendant Systems	16
-----------------	----

## Operating Tables



## Surgical Suction Units




Operating Tables	18
Surgical Positions	26
Mobile Imaging Table	30
Operating Table Accessories	32

Surgical Suction Units	58
Portable Suction Units	63
Accessories	64
Manual Suction Unit	65







## New Generation Operating Lights

Inspital LED operating lights are designed to meet all lighting and viewing requirements of operating theatres.

Powerful LED technology with high-tech camera solution helps the surgeons to operate and view the surgery area clearly. LED lights can be adapted in any size of operating theatres including large hybrid types with variety of models & combinations.



■ video



## Operating Light Model LD20.53

### Description

Double Head Operating Light with Camera  
and Arm Mounted 24" Medical Monitor

### Features

- New generation LED technology
- 360° Rotating horizontal arms
- 360° Rotating spring arms
- Full HD camera
- 24" medical monitor
- Control of focus, light intensity and color temperature with sterilizable handle
- Active Illumination Management
- User friendly touch screen control unit (4.3" LCD)
- Flexible arms provide comfortable movement
- It is environmental friendly because it does not emit harmful UV Rays.







■ The new generation LED technology helps surgeons to clearly view the surgery field. Inspital LED lights can be adapted in any size of operating theatres including large hybrid operating rooms (OR)'s with a variety of models and combinations.

## Technical Specifications

• Max. illumination power in 1 m	: 160.000 Lux
• Light head diameter	: Ø670 mm
• Color temperature	: 3000 K - 5000 K
• Color rendering index, Ra CRI	: 96%
• Illuminance can be adjusted from	: % 1 – 100
• Light field diameter d50	: 13 – 28 cm / 5.1" – 11"
• Number of LED modules	: 60
• Lifetime of LED	: >60.000 h
• Degree of turbulence (standard value 37.5 % max.)	: 29%
• Depth of the volume of light L1 + L2 at 20 %	: 130 cm / 51.2"
• Depth of the volume of light L1 + L2 at 60 %	: 76 cm / 30"
• Camera	: 1080p Full HD : 10x optical zoom : autofocus
• Medical monitor	: 1080p Full HD
• Irradiance at nominal illuminance	: 510W/m <sup>2</sup>
• Additional options	Wall panel, Medical monitor, Camera, UPS

• All values are measured according to IEC 60601-2-41



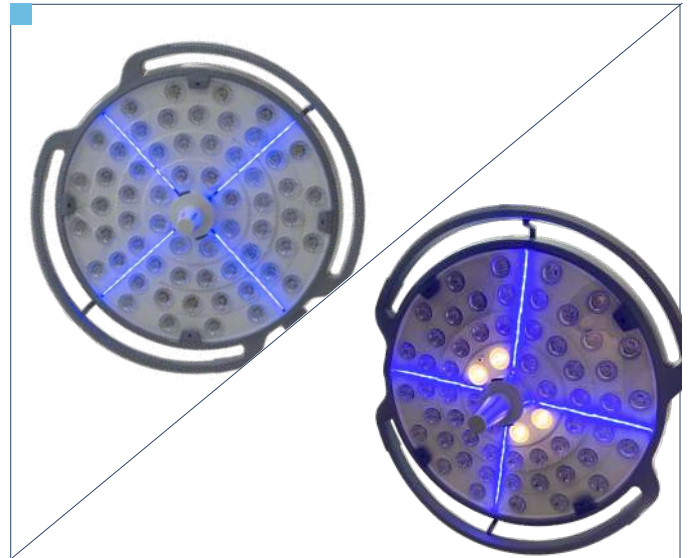
### UPS

External UPS can be added for ceiling type operating lights  
A.C. : LD05.05



### Active Illumination Control (AIC)

Inspital LED light technology provides the best illumination, even when surgeons are blocking the LEDs. The loss of illumination when certain LEDs are obstructed is automatically compensated by the AIC system.



### StandBy Mode/ Endo Light Mode

Stylish blue LED strips in standby mode.

Endo light mode can be activated with one touch, switching immediately and ready for endoscopic procedures.



### Laser Positioning Guide

Each light head has a laser guide to easily and efficiently position the lighting center.



### Auto Light Feature

When the Auto Light feature is activated, the light intensity at the center remains constant at any height, angle or obstacle using the PID method.

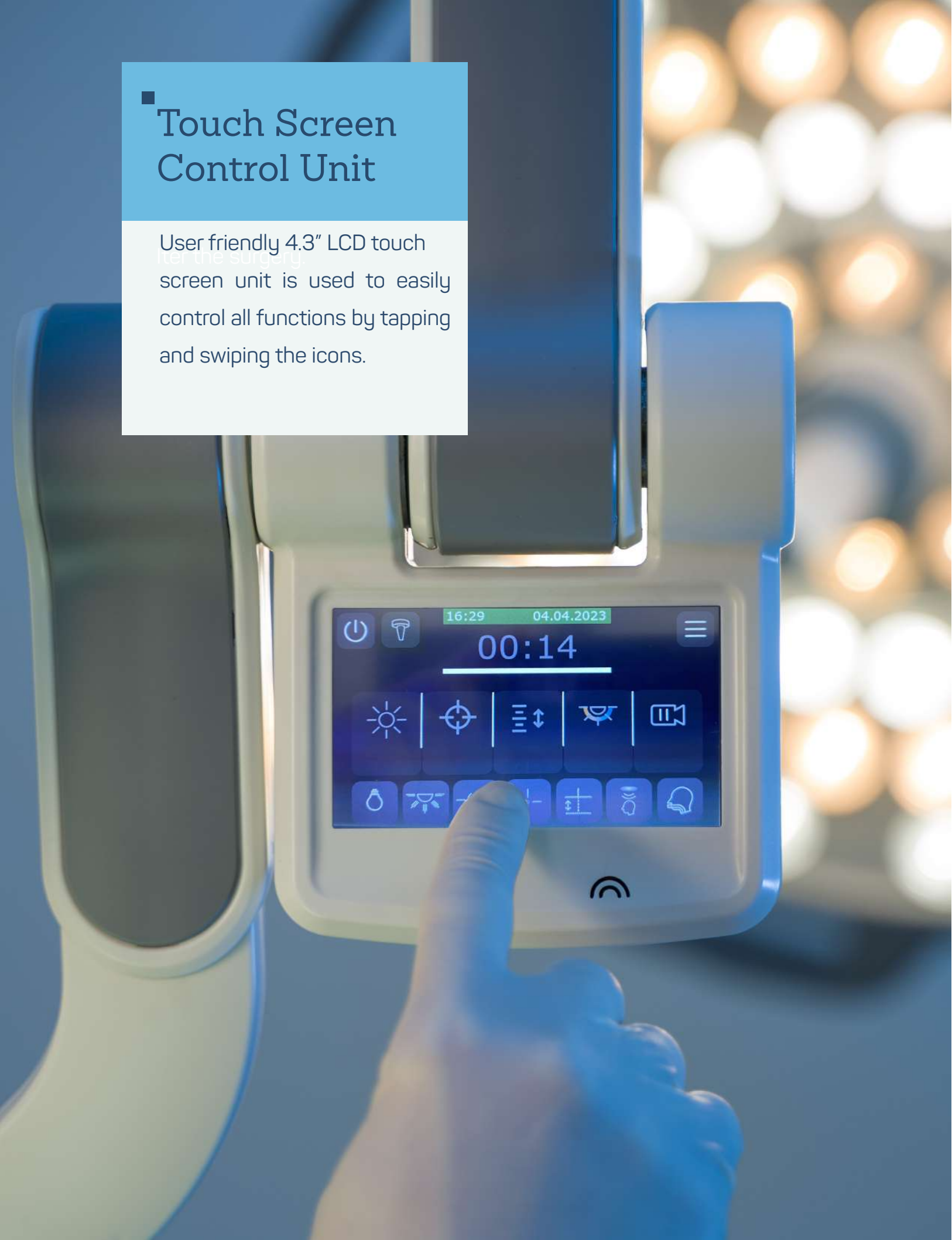


### Wall Panel

Wall panel unit gives access to surgeons to control the lightheads and can do every function touch screen control unit does.

## ■ Touch Screen Control Unit

User friendly 4.3" LCD touch screen unit is used to easily control all functions by tapping and swiping the icons.



## Operating Lights

Model LD20.24

Model LD20.52

### Description

- Double Head Operating Light with Camera and Wall Mounted 24" Medical Monitor - LD20.24
- Double Head Operating Light with Camera (without Monitor) - LD20.52



## Operating Light

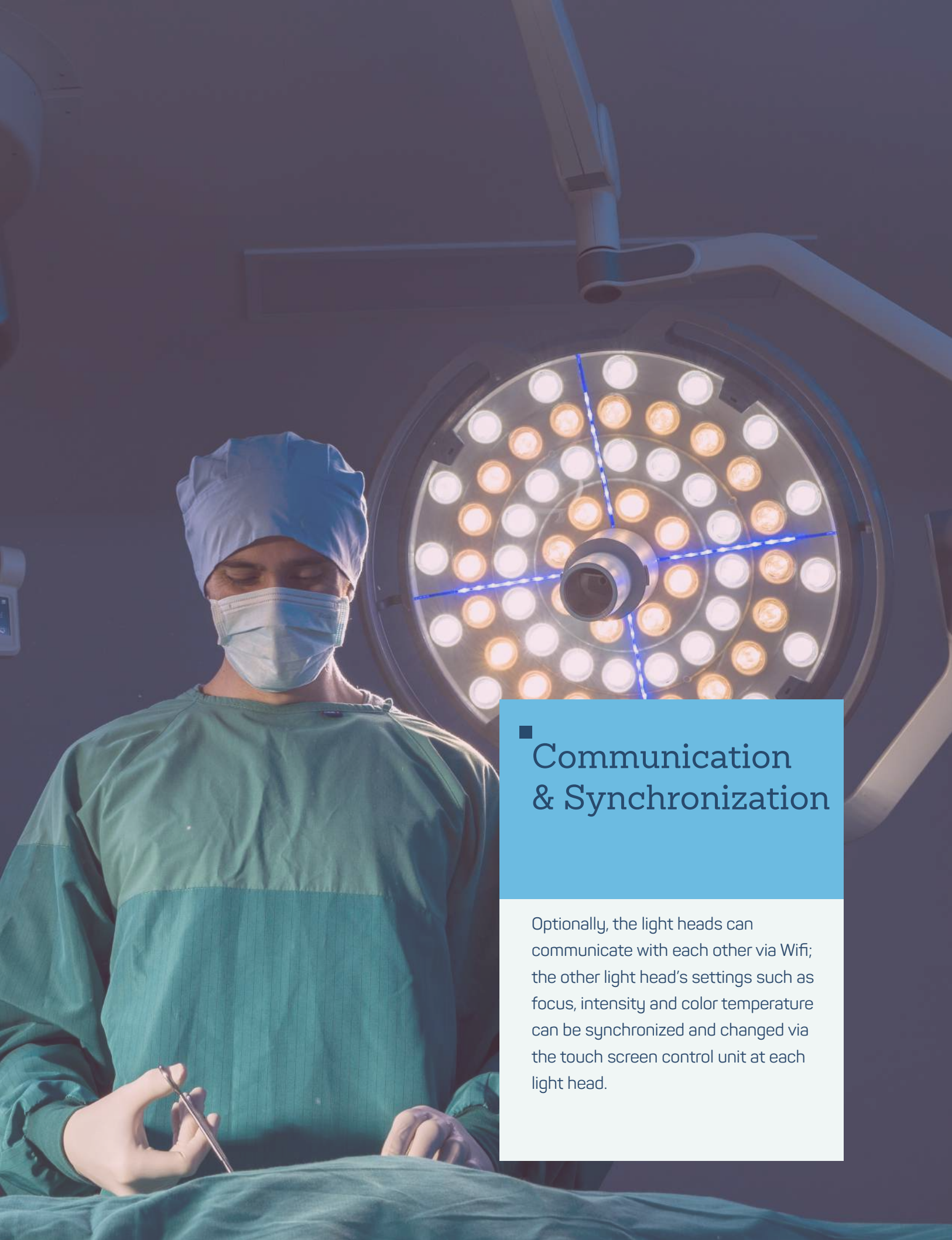
Model LD10.03

### Description

- Triple Head Operating Light







## ■ Communication & Synchronization

Optionally, the light heads can communicate with each other via Wifi; the other light head's settings such as focus, intensity and color temperature can be synchronized and changed via the touch screen control unit at each light head.

## Operating Light Model LD10.02

### Description

- Double Head Operating Light



## Operating Light Model LD10.01

### Description

- Single Head Operating Light



## Mobile Operating Light with Battery

Model LD05.06

### Description

- Inspital mobile operating lamp provides high mobility with four castors and solid positioning with two brakes.
- Battery back up system provides 2,5 hours of energy



## Medical Imaging Workstation

Model LD30.00

### Dimensions

262(L) X 172(W) X 120(H) mm

### Description

Medical Imaging Workstation is an advanced medical grade image recorder. It has 4.3" LCD monitor for easy browse. Quick set up and easy to use system detects video connection automatically.

### Description

- Display : 4.3 inch LCD
- Inlet voltage : DC 12V 3A
- Hard disc capacity : 500 GB
- Recording Time
  - High quality : 75 hours
  - Medium quality : 115 hours
  - Low quality : 275 hours



Video Foot Pedal port (3.5mm stereo jack) X 1, Photo Foot Pedal port (3.5mm stereo jack) X 1, IR Receiver cable port (3.5mm stereo jack) X 1, READ HDD port (Mini USB) X 1, PC port (USB 3.0) X 1, Extensionport (RS232) X 1, DC Power Supply port X 1

## Examination Lights

Model LD02.08

Model LD02.05

Inspital examination lights can provide optimal lighting for examination procedures and minor surgeries

### LED Technology

- Advanced LED technology to fulfill lighting requirements of any kind of minor surgeries and examinations
- Well-focused LED light thanks to the specially designed reflector system
- Maintenance free LED technology
- Easily accessible on/off switch and 5-level dimming function

### Body Structure & Head Design

- Light head can be easily positioned in desired area and rotated through 360° thanks to its flexible arm
- Modern, elegant and slim design

### Technical Specifications

- |                                 |                      |
|---------------------------------|----------------------|
| • Illumination                  | : 30.000 Lux / 0,4 m |
| • Light head diameter           | : Ø150 mm            |
| • LED lifetime                  | : >60.000 h          |
| • Color rendering index, Ra CRI | : 95%                |
| • Number of LED modules         | : 6                  |
| • Color temperature             | : 4500 K             |
| • Height                        | : LD02.08 / 1500 mm  |
|                                 | : LD02.05 / 1100 mm  |





## PENDANTS

Each pendant can be customized and manufactured according to the needs of the hospitals..

Hospital Medical Pendant Systems provide medical gases, electrical outlets and medical equipments at a single point with high mobility.

Mobility, flexibility and robust design



## ■ Heavy Duty Motorised Pendant Model FX40.15M

The motorised feature facilitates the access and transport of the medical equipments. Robust arm has high payload capacities.

### Features

- 350° rotation
- Motorised controlled up and down movement
- Body height can be adjusted between these 2 options: 600 mm / 800 mm
- Pneumatic brake system
- Painted with RAL 9002

---

### Standard accessories

- Power outlets: 8 pcs
- Grounding nodes: 8 pcs
- IV Stand: 2 pcs
- Shelf: 1 pc

---

### Optional accessories

- Medical gas outlets
- Pressure gauge for medical gases
- Extra shelves
- Drawer
- Data socket (RJ45)
- Power sockets
- Grounding nodes



## Heavy Duty Double Joint Pendant Model FX40.20D

### Features

- 350° rotation
- Painted with RAL 9002
- High mobility and extended reach due to double joint design
- Body height of the unit is customisable with two available options: 600mm and 800mm
- Pneumatic brake system

### Standard accessories

- Power outlets: 8 pcs
- Grounding nodes: 8 pcs
- IV Stand: 2 pcs
- Shelf: 1 pc

### Optional accessories

- Medical gas outlets
- Pressure gauge for medical gases
- Extra shelves
- Drawer
- Data socket (RJ45)



## Heavy Duty Single Joint Pendant Model FX40.10S

### Features

- 350° rotation
- Painted with RAL 9002
- High mobility and ease of reach
- Body height of the unit is customisable with two available options: 600mm and 800mm
- Pneumatic brake system

### Standard accessories

- Power outlets: 8 pcs
- Grounding nodes: 8 pcs
- IV Stand: 2 pcs
- Shelf: 1 pc

### Optional accessories

- Medical gas outlets
- Pressure gauge for medical gases
- Extra shelves
- Drawer
- Data socket (RJ45)



## Pendant Accessories



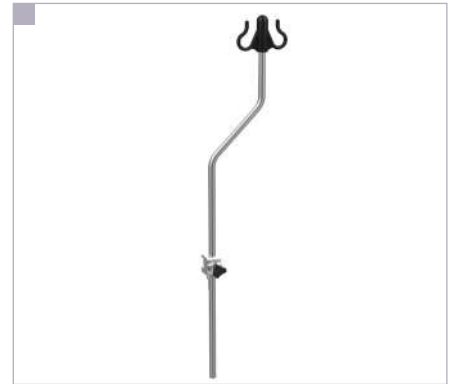
IV Pole,  
Double, Rail Type

Model SR10.22



IV Pole, With Clamp

Model SR10.32



IV Pole with Connector

Model SR10.33



Basket, Stainless Steel, Rail Type

Model FX41.01 220x220x240 mm

Model FX41.02 220x400x240 mm



Monitor Tray, Rail Type

Model FX41.03



Monitor Tray, Wall Type  
400 mm Height Adjustment

Model FX41.04



Drawer for the wall, 540 x 360 mm

Model FX41.05



Shelf with Drawer for Pendants,  
500 x 400 mm

Model FX41.07 Shelf

Model FX41.06 Drawer



Examination Lamp LED, Rail Type

Model LP10.05







## ■ Operating Tables

Hospital operating tables are designed to meet all special requirements of operating theaters with its powerful and stable electro-hydraulic systems

## ■ Innovation for Hospital

Wide range of accessories makes operating table suitable for different kind of surgeries.



■ video





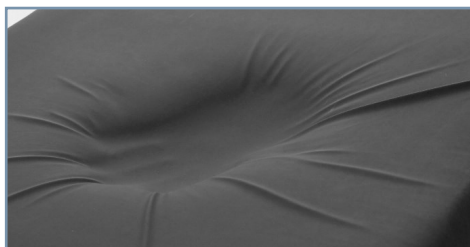
#### Hand control unit with color LCD display

- battery level indicator
- 3 user-defined storable memory positions
- The key lock feature helps to prevent unintentional button pressing
- Collision protection sensors





Optional stainless steel T-base



Optional visco mattress



## Electro-Hydraulic Operating Table

### Model OT80.20 NOVUS

Inspital Medical's high technologic model NOVUS meets all requirements of the modern operating theaters.

#### Dimensions

560x2200 H mm

#### Materials

- **T-Base:** ABS Plastic or AISI316 Stainless Steel
- **Mattress:** Polyurethane or Visco

#### Configuration

- Visco mattress allows contouring and its slow response lowers bounce
- Long life polyurethane mattress has a more sturdier surface which makes it more resistant
- Integrated stainless steel side rails on both sides for wide range of accessories
- Full function column control panel
- T-base provides ideal access due to its design
- Ideal X-Ray transparency allowing high quality imaging
- Durable telescopic stainless steel column
- Central locking system



## Electro-Hydraulic Operating Table Model OT80.25

### Dimensions

560x2200 H mm

### Materials

- **Base:** ABS Plastic
- **Mattress:** Polyurethane or Visco

### Configuration

- Visco mattress allows contouring and its slow response lowers bounce
- Integrated stainless steel side rails on both sides for wide range of accessories
- Full function column control panel
- Durable telescopic stainless steel column
- Long life polyurethane mattress has a more sturdier surface which makes it more resistant
- Central locking system



The antibacterial coating technology makes the surface easy to clean, highly corrosion resistant and prevents the accumulation of blood and body fluids on the mattress.

## Mechanical Surgery Table Model OT80.10

### Dimensions

560x2200 H mm

### Materials

- **Base:** AISI304 Stainless Steel
- **Mattress:** Polyurethane or Visco

### Configuration

- Easy to access positioning arms
- Unique PU mattress design
- All movements can be done without electricity
- Hydraulic lift for height adjustment
- Long life polyurethane mattress has a more sturdier surface which makes it more resistant
- Integrated stainless steel side rails on both sides for wide range of accessories



Inspital Mechanical Operating Table is manually controlled and provides cost effective solution for surgical needs.

A large, modern operating room setup. In the center is a large, adjustable operating table with a black cushioned top and a silver metal frame. The table is tilted upwards. Above the table is a large, circular overhead light fixture with many small, round light bulbs. To the right of the table is a medical monitor on a stand, displaying a green waveform. Below the monitor is a control panel with various buttons and a small screen. The background is a blue wall with a grid of drawers or cabinets. The overall lighting is dim, with the overhead light fixture providing the main illumination.

## ■ Wide Range of Accessories

With many accessory options  
Inspital operating tables are  
ready for general and speciality  
surgeries





## Technical Specifications

• Model	: OT80.20	: OT80.25
• Sliding Movement	: 300 mm	: 300 mm
• Lateral Tilt Movement	: + 20° / - 20°	: + 20° / - 20°
• Back Rest Movement	: + 80° / - 45°	: + 80° / - 45°
• Trendelenburg	: + 30°	: + 30°
• Reverse Trendelenburg	: - 30°	: - 30°
• Leg Rest Up / Down	: + 30° / - 90°	: + 30° / - 90°
• Head Rest Movement	: + 30° / - 90°	: + 30° / - 90°
• Flex / Reflex Position	: + 225° / - 100°	: + 225° / - 100°
• Width x Length	: 560 x 2200 mm	: 560 x 2200 mm
• Height (min)	: 595 mm	: 595 mm
• Height (max)	: 1035 mm	: 1035 mm
• Mattress Thickness	: 70 mm	: 70 mm
• Castors Diameter	: Ø 100 mm	: Ø 125 mm
• Max Patient Weight	: 360 kg / 800 lbs.	: 360 kg / 800 lbs.
• Kidney Surgery Position	: 150° (optional, OT80.20K)	: 150° (optional, OT80.25K)
• Stainless Steel T-base	: Optional, OT80.20S	: -
• Visco mattress	: Optional, OT80.20V	: Optional, OT80.25V

### MOVEMENTS

• Height	: ●	: ●
• Back Rest	: ●	: ●
• Trendelenburg	: ●	: ●
• Lateral Tilt	: ●	: ●
• Sliding	: ●	: ●
• Central Locking	: ●	: ○
• Head Rest	: ○	: ○
• Leg Rests, Up / Down	: ○	: ○

\*Max. & Min. heights are measured without mattress

Electro-hydraulic ●

Manual ○





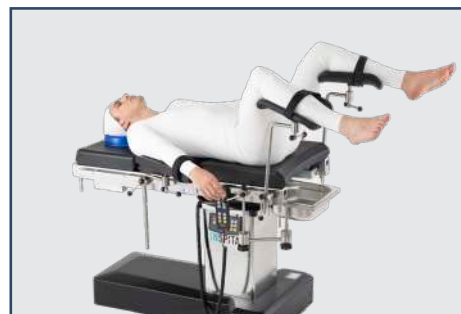
: OT80.20 Novus	: OT80.15 Bariatric	: OT80.10 Mechanical
: 300 mm	: 300 mm	: -
: + 20° / - 20°	: + 20° / - 20°	: -
: + 80° / - 45°	: + 80° / - 45°	: +45° / - 25°
: + 30°	: + 30°	: + 25°
: - 30°	: - 30°	: - 10°
: + 30° / - 90°	: + 30° / - 90°	: + 30° / - 80°
: + 30° / - 90°	: + 30° / - 90°	: + 30° / - 90°
: + 225° / - 100°	: + 225° / - 100°	: -
: 560 x 2200 mm	: 720 x 2200 mm	: 560 x 2200 mm
: 595 mm	: 595 mm	: 590 mm
: 1035 mm	: 1035 mm	: 850 mm
: 70 mm	: 70 mm	: 70 mm
: Ø 100 mm	: Ø 100 mm	: Ø 125 mm
: 360 kg / 800 lbs.	: 454 kg / 1000 lbs.	: 250 kg / 550 lbs.
: 150° (optional, OT80.20NK)	: 150° (optional, OT80.15K)	: -
: Optional, OT80.20NS	: Optional, OT80.15S	: -
: Optional, OT80.20NV	: Standard, OT80.15	: Optional, OT80.10V
: ●	: ●	: ○
: ●	: ●	: ○
: ●	: ●	: ○
: ●	: ●	: -
: ●	: ●	: -
: ●	: ●	: ○
: ○	: ○	: ○
: ○	: ○	: ○

*Surgical Positions*

Kidney / thorax surgery in lateral position



General / struma surgery position



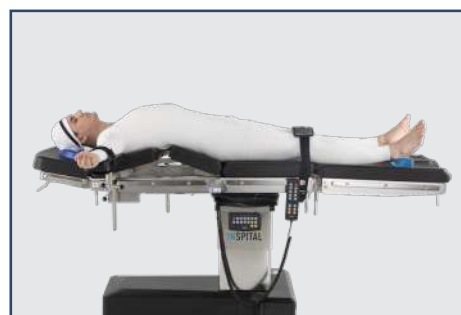
Gynecology, urology and proctology surgery position



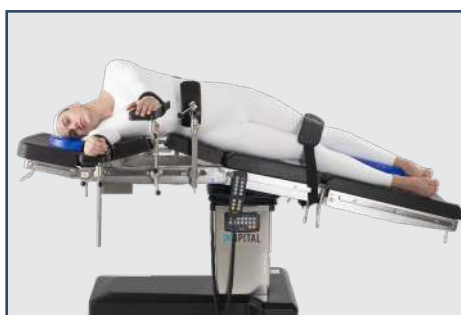
Beach chair / Reflex position



Prone / Flex position



Kidney, sternum surgery position



Chest Surgery Position



Spine / proctology surgery in knee-elbow position



Chest / breast surgery position



ENT / ophthalmic surgery position



Shoulder arthroscopy position



Upper arm traction / surgery position



Leg Positioning



Orthopedic Traction position



Meniscus / knee arthroscopy position



Neurosurgery Position



Bariatric Laparoscopic Surgery Position



Spinal Surgery Position



### **Kidney Elevator (Optional)**

Integrated kidney elevator which is adjustable up to 70 mm provides compatibility with the relevant operation



### **Sliding feature**

Easy access to X-Ray by its longitudinal sliding feature of 300 mm without disturbing the sterile environment



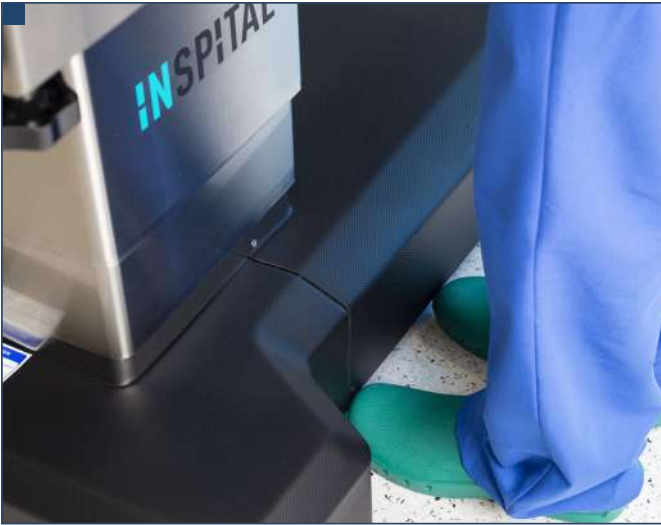
### **Functional design**

Inspiral Medical operating tables are designed for easy compatibility to meet requirements of different kind of surgeries



### **Accessory positioning**

Stainless steel side rails integrated on both sides of the table allow accessories to be attached



### T-base

The T-base provides ideal access for the surgical team and OR furniture. Corrosion resistant ABS material or stainless steel T-base options



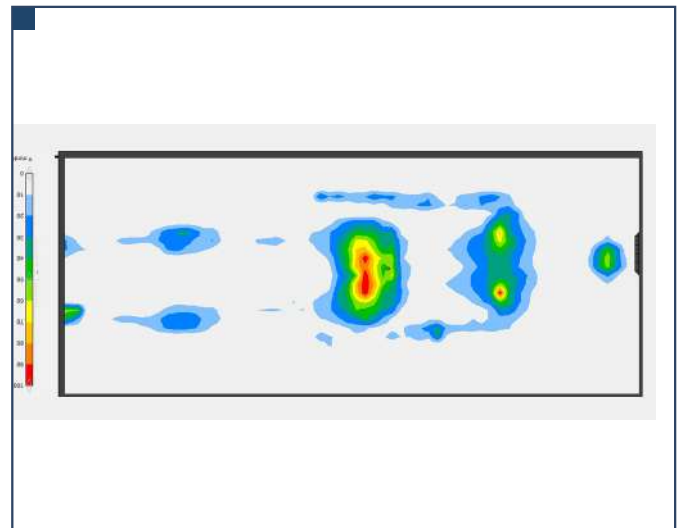
### Multiple Control Units

User friendly hand and column control units with 7 adjustable functions including brake system



### Ideal access for C-arms

Radiolucent table top allows high imaging in all areas while enables easy access of C-arm



### Ideal mattress performance

Upholstery mattresses are designed and manufactured according to the test results of Pressure Mapping Technology



## Mobile Imaging Table

### Model OT80.30

Inspital imaging tables are designed to provide excellent X-ray transparency with their lightweight carbon fibre tabletop, while maintaining high load-bearing capacity. Providing maximum image quality at low radiation and ideal solutions interventional radiology. The visco pad ensures a high level of patient comfort.

#### Dimensions

620x2450 H mm

#### Materials

- **Tabletop:** Carbon Fiber
- **Mattress:** Visco

#### Configuration

- Movements are controlled via a wired hand control unit or a control panel with a precision joystick
- The design is compatible with digital and conventional X-Ray units
- Carbon fiber tabletop has high X-ray permeability at  $\leq 0,43$  mmAL



#### Technical Specifications

• Length of imaging	: 1860mm
• Longitudinal slide	: 790 mm
• Lateral slide	: 215 mm
• Height adjustment	: 750 - 1140 mm (390 mm stroke)
• Trendelenburg	: -18° / +18°
• Lateral tilt	: -15° / +15°
• Max. patient weight	: 200 kg



360° imaging capability at 1100 mm table tray ensures ideal imaging for various applications



Double control with precision joystick and hand control unit ensures ideal patient positioning.



## Extension device Model OT60.90

### Description

The extension device is suitable for all Inspital operating tables

### Materials

- Stainless steel
- **Countertraction Post:** Polyurethane
- **Seating Mattress:** Visco

### Configuration

- 1 pc countertraction post
- 2 pcs telescopic bars with swiveling joints
- 2 pcs screw tension devices
- 2 pcs traction boots
- 2 pcs height adjustable supporting bars



## Neurosurgery skull clamp & horseshoe head rest Model OT60.80

### Description

Our neurosurgical skull clamp & horseshoe head rest allow stable fixation of the head, ensuring high patient safety to achieve optimal treatment results

### Configuration

- Extremely durable and rigid construction from aluminum alloy
- Easy to clean and disinfect
- 3 point fixing system with pins and completely adjustable skull clamp
- Adjustment mechanism from 4 different points
- Easily mountable horseshoe head rest



## Cross bar adapter Model OT60.82

### Configuration

- Secure adaptation of skull clamp for seated patient positioning
- Adaptable to OT table width

## Carbon fiber extension device Model OT60.95

### Description

The extension device is suitable for all Inspital operating tables

### Materials

Made of carbon fiber and 304 high-quality stainless steel

### Configuration

- 1 pc countertraction post
- 2 pcs traction support bars with swiveling joints
- 2 pcs screw tension devices with
- 2 pcs traction boots
- 2 pcs height adjustable supporting bars
- 2 pcs leg support



## Transport trolley for carbon fiber extension device Model OT60.96

### Materials

Made of high-quality stainless steel

### Configuration

- Effortless storage and transportation of extension device
- Easy installation
- Four swivel castors, two with brakes



## Shoulder arthroscopy support Model OT60.76

### Description

Provides easy access to the shoulder area for applicable surgeries.

### Configuration

- Suitable for all Inspital Medical Operating Tables
- Adjustable back rest in 7 steps
- Height adjustable head fixation
- Body fixation strap



## Radiolucent spine frame Model OT60.35

### Description

Supports patient in an ideal flexed position during spinal and proctological operations. Thanks to its curved structure, it supports the chest and pelvis, relieves pressure in the abdominal area and thus ensures a high level of comfort for patient.

### Configuration

- Designed to meet all requirements with 60 degree radiolucent features.
- Posture control with improved surgical access for Laminectomy control for improved surgical access
- Easy to use crank system
- The design of the Radiolucent spine frame allows easy transport and storage





## Leg positioning boot Model OT60.77

### Description

Leg positioning boot facilitates the posture of the patients to meet your specific needs in bariatrics, gynecology, lithotomy, urology or long lasting operations.

### Configuration

- Safe and easily adjustable in various positions
- Adjustable clamps for stabilization, remains securely in position
- Special comfort boots for pressure relief of the calves thanks to soft padded insert
- Prevents injury in the area of the nervus peroneus



## Trolley for leg positioning boots Model OT60.78

### Description

Strong and lightweight trolley with two lockable castors for secure storing and transporting leg positioning boots



**IV stand**

- Made of high-quality stainless steel
- Includes clamp
- Height adjustable
- 2 hooks

Model OT60.05

**IV stand**

- Made of high-quality stainless steel
- Includes clamp
- Height adjustable
- 4 hooks

Model OT60.06

**Anaesthesia screen, extendable**

- Made of high-quality stainless steel
- Includes clamp
- Height adjustable
- Extendable to both sides

Model OT60.04

**Anaesthesia screen**

- Made of high-quality stainless steel
- Includes clamp
- Height adjustable
- Dimensions: Ø12 x 820 x 640 mm

Model OT60.03



#### Clamp, rotatable

- Made of high-quality stainless steel,
- Single lever for complete lock: simultaneous fixation of accessories, radial adjustment and the toothed clamping element
- Suitable for 25 x 10 mm rails, 360° rotatable

Model OT60.17



#### Clamp, rotatable

- Made of high-quality stainless steel
- Separate levers for rail fixation and radial adjustment
- 360° rotatable
- For attaching accessories with round rod
- Suitable for 25 x 10 mm rails

Model OT60.18



#### Clamp, easy fix

- Made of aluminium
- Easy to fix type
- Front attachment, no need to slide from one side of the rail
- For attaching accessories with round rod
- Suitable for 25 x 10 mm rails

Model OT60.15



#### Clamp, standard

- Made of high-quality stainless steel
- For attaching accessories with round rod
- Suitable for 25 x 10 mm rails

Model OT60.16



#### Goepel leg holder, pair

- Made of high-quality stainless steel
- Includes clamps
- Height adjustable
- Rotatable and tiltable via ball-joint

Model OT60.08



#### Goepel leg holder, pair

- Made of high-quality stainless steel
- Includes rotatable clamps
- Height adjustable
- Rotatable and tiltable via ball-joint

Model OT60.98



#### Knee arthroscopy support, pair

- Made of high-quality stainless steel
- Includes clamps
- Height adjustable
- Rotatable and tiltable via ball-joint

Model OT60.36



#### Arm rest with one-hand control

- Made of high-quality stainless steel
- Curved PUR upholstery to support arm better.
- Includes clamp and straps
- Height adjustable
- Rotatable by 360°, swivelling and tiltable by one-hand

Model OT60.85

**Arm rest**

- Made of high-quality stainless steel
- Curved PUR upholstery to support arm better
- Includes clamp and strap

**Model OT60.01 - Arm rest****Model OT60.02 - Strap****Model OT60.34 - Arm adaptor****Arm rest**

- Made of high-quality stainless steel
- Curved PUR upholstery to support arm better
- Includes clamp and strap
- Rotatable and tiltable via ball joint
- Adjustable in height and horizontally slidable

**Model OT60.89****Arm rest for lateral patient positioning**

- For usage in lateral, prone, beach chair, and neuro parkbench positions
- Curved PUR upholstery to support arm better
- Includes clamp
- Rotatable and tiltable via ball joint

**Model OT60.87****Leg strap, pair**

- Easy adjustable length
- Washable

**Model OT60.23**



**Body fixation strap**

- Total length 2300 mm
- Large body belt padding
- Easy adjustable length
- Washable

Model OT60.07

**Body and leg strap**

- Includes clamps made of high-quality stainless steel
- Easy adjustable length
- Washable

Model OT60.97

**Sliding handles, pair**

- Made of high-quality stainless steel
- Includes clamps
- Height adjustable
- Provides easy movement for operating tables

Model OT60.25

**Lithotomy poles with loops, pair**

- Made of high-quality stainless steel
- Includes clamps
- Height adjustable
- Washable heel loops

Model OT60.74



#### Rinsing bowl, rectangular

- Rinsing bowl with outlet
- Includes clamp
- 2 rotatable joints
- Capacity: 8 litres
- Sizes: 325 x 265 x 95 mm

Model OT60.11



#### Rinsing bowl, rectangular with drainage tube

- Rinsing bowl with outlet and drainage tube
- Includes clamp
- Rotatable joints
- Capacity: 8 litres
- Sizes: 325 x 265 x 95 mm

Model OT60.12



#### Waste bin

- Compatible with rinsing bowl and drainage tube
- Inlet cover for drainage tube
- Bucket with carrying handle
- Capacity: 20 litres

Model OT60.14



#### Rinsing bowl, round with drainage tube

- Rinsing bowl with outlet and drainage tube
- Includes clamp
- 2 rotatable joints
- Height adjustable
- Capacity: 8 litres, Sizes: Ø 260 x 80 mm

Model OT60.13



#### Shoulder support, pair

- Made of high-quality stainless steel
- Includes clamps
- Height adjustable
- Extendable
- PUR pads anatomically shaped

Model OT60.09



#### Lateral support, pair

- Includes clamps
- Extendable
- 360° rotatable
- Pads rotatable and tiltable via ball joint
- PUR pads anatomically shaped

Model OT60.10



#### Rectal positioning set

- Set of rectoscopy roll and knee supports
- Includes clamps
- Rectoscopy roll height adjustable and tiltable
- Rectoscopy roll rotatable clamp
- Knee supports rotatable and tiltable via ball-joint

Model OT60.20



#### Opthalmology, head and wrist support

- Comes with adaptor for attachment of horseshoe head rest
- Horseshoe head rest is rotatable and tiltable toothing element and ball-joint
- Adjustable wrist support height by clamp and tiltable via ball-joint

Model OT60.21



#### Arm extension set

- Made of high-quality stainless steel
- Humerus positioning device with ball-joint, adjustable height with clamp
- Includes Weinberger hand traction device, can be sterilised
- Humerus countertraction post, height adjustable with clamp

Model OT60.22



#### Knee arthroscopy support

- Includes clamps
- Meniscus positioning roll
- Lateral knee supports, rotatable and tiltable pads via ball joint
- PUR pads anatomically shaped

Model OT60.72



#### Meniscus positioning roll

- Made of high-quality stainless steel
- Includes clamp
- Height adjustable
- Meniscus positioning roll

Model OT60.24



#### Arthroscopic leg holder system

- Made of high-quality stainless steel
- For fixation of thigh
- Includes rotatable clamp and curved upholsteries
- Height and width adjustable
- Width of leg holder is adjustable via hand crank

Model OT60.86



#### Foot support plate, pair

- Holder made of high-quality stainless steel
- Plates made of HPL
- Includes clamps

Model OT60.19



#### Carbon fibre extension plate

- Made of high-quality carbon fibre
- 360° radiolucency through a full length
- Attachment to the pelvic section

Model OT60.73



#### Transfer board

- Holder made of high-quality stainless steel, covered with durable artificial leather
- Supports the patients legs during transfer
- Lightweight and easy mounting at pelvis section
- Radiolucent in the middle

Model OT70.00



#### Mayo tray attachment

- Made of high-quality stainless steel
- Includes clamp
- Height adjustable

Model OT60.84



**X-ray cassette holder**

- Made of high-quality stainless steel
- Includes clamp
- Height adjustable
- Swiveling holder

**Model OT60.30****X-ray cassette tray**

- Made of high-quality stainless steel
- Includes clamp

**Model OT60.31****Arm / hand surgical table**

- Made of high-quality stainless steel
- Includes clamps, Height adjustable
- 2 supporting legs with lockable castors
- Side rails
- Visco pad removable

**Model OT60.26****Arm / hand surgical table**

- Made of high-quality stainless steel and plexiglas
- Includes clamps
- Height adjustable
- 2 supporting legs

**Model OT60.39**

**Arm protector**

- Transparent
- For sliding under the mattress
- Safe and anatomically correct positioning and protection of patient's arm

**Model OT60.75****Side protector, pair**

- Made of high-quality stainless steel
- Includes fast locking clamps
- Tilttable

**Model OT60.38****Flexible anaesthesia screen**

- Made of high-quality stainless steel
- Includes clamps
- Bendable and individually adjustable

**Model OT60.83****Spine surgery positioning frame**

- Radiolucent
- Angle shaped complete with ergonomic cushions and edges to support iliac crests
- Rotating and height adjustable knee supports
- Attachment to the pelvic section

**Model OT60.37**



#### Widening segments

- Made of high-quality stainless steel and with visco mattress
- Widens the operating table surface area
- Integrated side rails 10 x 25 mm
- Visco mattress

Model OT60.88



#### Patient heating system

- Displays adjustable and measured temperature simultaneously
- Advanced alarm and security system
- Provides safe use with key lock
- Temperature sensitivity 0.1°
- Polyurethane fabric and carbonfiber heating layer

Model OT60.71



#### Head rest small

- Made of high-quality stainless steel and with PUR mattress
- Easy adjustment by means of gas spring

Model OT60.99



#### Hand control support

- Made of high-quality stainless steel
- Easy to fix to accessory rail

Model OT60.29



#### Hand control

- Hand control for all electrical functions of operating table
- User-friendly and self-explanatory

**Model OT60.27**



#### Foot pedal

- Additional control unit to adjust the main functions like height, tilt and Trendelenburg movement
- Cable connected

**Model OT60.28**

#### Stabilization Aids

- Made of soft and durable vinyl fabric and plastic beads
- Soft pads are molded around the patient and vacuum to fix the shape of the patient.
- Can be vacuumed by any vacuum source



#### Thyroid stabilization aid

- Provides hyperextension and prevents postoperative discomfort
- Dimensions (L x W) 72 x 88 cm

**Model OT60.66**



#### Full body stabilization aid Model OT60.67

- Provides hyperextension and prevents postoperative discomfort
- Dimensions (L x W) 72 x 88 cm

#### Vacuum Pump, Model OT70.02

- Full body stabilization aid
- Aluminum material



#### Head stabilization aid, Model OT60.69

- Easy positioning during ENT, ophthalmology, facial and dental surgeries
- Dimensions (L x W) 30 x 40 cm

#### Supine stabilization aid,

- For safe and stable positioning and stabilization
- Eliminates back pain during long surgeries
- Dimensions (L x W) 30 x 55 cm

Model OT60.70



#### Lateral / kidney stabilization aid

- Provides hyperextension and prevents postoperative discomfort
- Easy positioning during nephrectomy and also for disabled patients with cerebral palsy
- Dimensions (L x W) 73 x 100 cm

Model OT60.64



#### Lateral / kidney stabilization aid

- Provides hyperextension and prevents postoperative discomfort
- Easy positioning during nephrectomy and also for disabled patients with cerebral palsy
- Dimensions (L x W) 73 x 100 cm

Model OT60.68



#### Lateral / kidney stabilization aid

- Provides hyperextension and prevents postoperative discomfort
- Easy positioning during nephrectomy and also for disabled patients with cerebral palsy
- Dimensions (L x W) 118 x 88 cm

Model OT60.65



**Transport trolley for extension device**

- Made of high-quality stainless steel
- Effortless storage and transportation of extension device
- Enables easy installation
- Large storage basket for further accessories
- Four swivel castors, two with brakes

**Model OT60.33** \_\_\_\_\_

**Accessory trolley**

- Made of high-quality stainless steel
- Effortless storage and transportation of operating table accessories
- Enables easy installation
- Four swivel castors, two with brakes

**Model OT60.32** \_\_\_\_\_

**Step: double/single**

- Made of high-quality stainless steel
- Anti slippery surface
- 640 x 600 x 400 mm double
- 600 x 350 x 180 mm single

**Model BS10.20, double****Model BS10.10, single****Lateral positioner with gel pad**

- Made of high-quality visco coated foam and gel
- Includes 1 large cushion, 1 gel pad and 2 fixation straps
- Curved area relieves pressure from shoulder joint and upper arm
- Supports head and assures proper spinal alignment
- Dimensions: 720 x 500 x 100 mm

**Model OT60.60****Spinal disc pad**

- Consists of 1 piece of large frame cushion with Velcro straps and 4 pieces of gel pads
- High quality of flexible, comfortable, soft silicone material distributes pressure and weight evenly and prevents sores
- Durable structure for long life

**Model OT60.61****Gel operating table pad**

- Made of high-quality gel
- Easy to clean and disinfect
- Dimensions: 1830 x 500 x 100 mm, adult
- Dimensions: 660 x 310 x 130 mm, pediatric

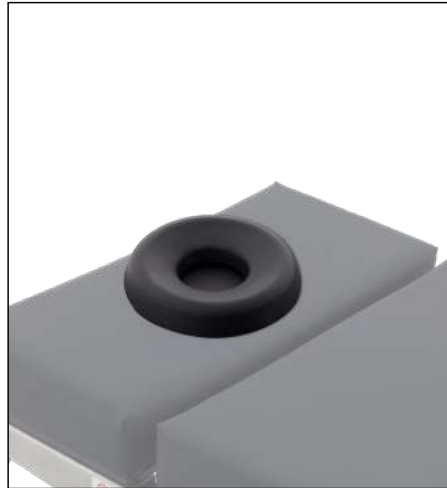
**Model OT60.62, adult****Model OT60.63, pediatric**

**Gel head ring**

- Made of high-quality gel
- Easy to clean and disinfect
- 200 x 75 x 45 mm, adult
- 140 x 60 x 35 mm, pediatric

**Model OT60.50, adult**

**Model OT60.51, pediatric** ■

**PUR head ring, adult**

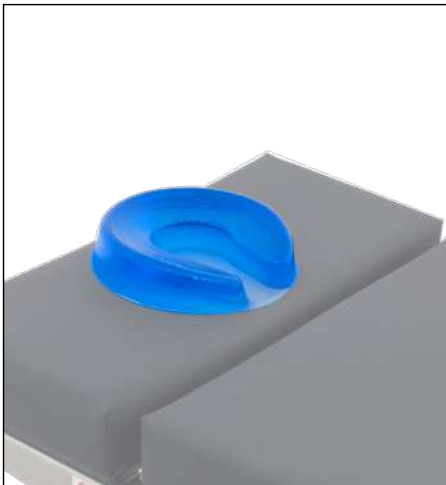
- Made of high-quality PUR
- Easy to clean and disinfect
- Dimensions: 195 x 85 x 40 mm

**Model OT60.40** ■

**Gel arm rest pad**

- Made of high-quality gel
- Easy to clean and disinfect
- Dimensions: 400 x 130 x 20 mm

**Model OT60.54** ■

**Gel head ring open**

- Made of high-quality gel
- Horseshoe design
- Easy to clean and disinfect
- 200 x 75 x 45 mm, adult
- 140 x 60 x 35 mm, pediatric

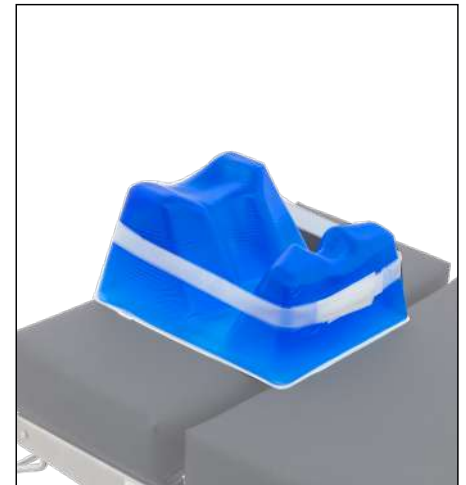
**Model OT60.52, adult**

**Model OT60.53, pediatric** ■

**PUR head ring open, adult**

- Made of high-quality PUR
- Horseshoe design
- Easy to clean and disinfect
- Dimensions: 195 x 80 x 45 mm

**Model OT60.41** ■

**Gel prone head rest**

- Made of high-quality gel
- Anatomically designed for ideal support and protection in prone position
- Lateral openings for breathing hoses
- Easy to clean and disinfect
- Dimensions: 280 x 230 x 145 mm

**Model OT60.57** ■

**Gel flat bottom chest roll**

- Made of high-quality gel
- Easy to clean and disinfect
- 515 x 170 x 100 mm, adult
- 420 x 170 x 100 mm, pediatric

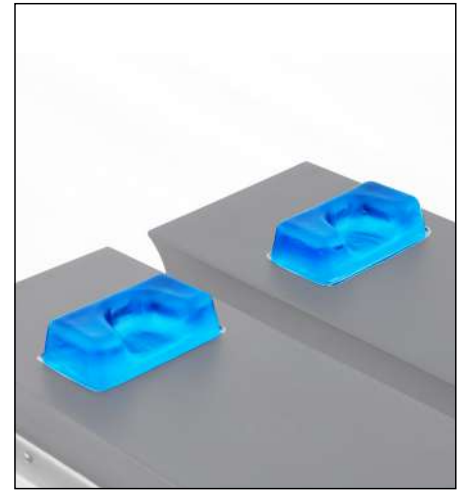
• **Model OT60.55, adult**

**Model OT60.56, pediatric** ■

**PUR flat bottom chest roll, adult**

- Made of high-quality PUR
- Easy to clean and disinfect
- Dimensions: 440 x 135 x 100 mm
- 

**Model OT60.42** ■

**Gel heel pads, pair**

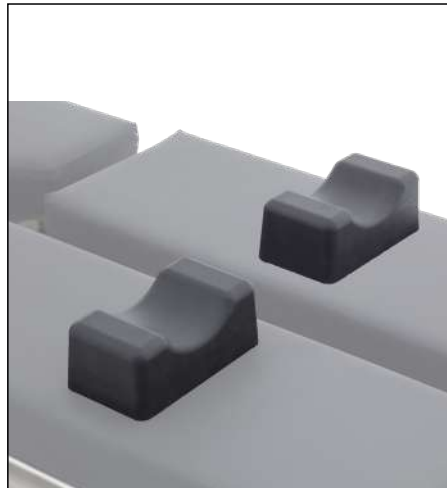
- Made of high-quality gel
- Easy to clean and disinfect
- Dimensions: 170 x 110 x 50 mm

**Model OT60.59** ■

**Gel foot / wrist pads, pair**

- Made of high-quality gel
- Easy to clean and disinfect
- Dimensions: 100 x 110 x 70 mm

**Model OT60.58** ■

**PUR foot / wrist pads, pair**

- Made of high-quality PUR
- Easy to clean and disinfect
- Dimensions: 175 x 95 x 70 mm

**Model OT60.43** ■

**Tunnel Cushion**

- For lateral positioning
- Prevents unintentional leg pressure against decubitus injury
- Dimensions: 650 x 400 x 220

**Model OT70.06** ■







## ■ Surgical Suction Units

Hospital Surgical Suction Units are designed for the suction of surgical fluids, gases and other wastes in operation area during and after the surgery.

Device creates stable vacuum performance at adjusted vacuum level thanks to its maintenance free oil-less vacuum pump. Wide range of accessories makes the device very suitable for many different departments in the hospital.



■ video

## ■ Surgical Suction Unit with 2x3L Reusable Collection Jar

### Model SU60.10

The device has an oil-less vacuum pump, so it does not require any maintenance. Inspital Surgical Suction Unit is silent, non-vibrating and powerful with 60L/Min flow rate.

#### Dimensions

930x460x450 H mm

#### Materials

- ABS worktop
- Polycarbonate jars

#### Configuration

- On / Off Button
- Vacuum Level Adjustment Knob
- Silicone Hose
- Bacteria & Hydrophobic Filter
- Robust and Easy to Clean Main Body
- Antistatic 4 Castors (with 2 brakes)
- Vacuum Gauge
- Jar Selection Switch
- Liquid Collection Jars
- Bumper Base
- Catheter Jar
- Accessory Storage



## ■ Surgical Suction Unit with 2x5L Reusable Collection Jar Model SU60.15



## Surgical Suction Unit with Extractor Model SU60.05

### Description

#### Foot Switch

Designed to be used in delivery operations via Malmstrom-Throe method by its integrated pedal system. Device has optional delivery assistance equipment as birth cups and cannula sets. Various liter collection jar and liner options are available

#### Safety Jar (Optional)

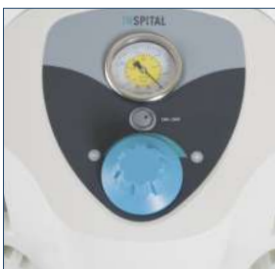
Protective technology preventing overflow and liquid leakage to pump system



## Surgical Suction Unit, Liposuction Model SU60.TP

### Description

Due to its structural nature fat has more density than blood so that more vacuum power is needed. With its 90+ liters per minute performance SU60.TP is more than capable of achieving the requirements in the lipectomy section. Various liter collection jar and liner options are available



## Surgical Suction Unit with Drainage Pump Model SU60.DN

### Description

Inspital drainage pump is specially designed for thoracic drainage applications in hospitals. Suction unit generates up to -50 cm H<sub>2</sub>O of vacuum pressure at 8 lpm flow rate. Water manometer enables easy follow for thoracic drainage. Various liter collection jar and liner options are available

Flow Rate : 8 lpm

Vacuum Range : 0 to -60 cm H<sub>2</sub>O



## Surgical Suction Unit with Disposable Liner

Model SU60.22 2x2L

Model SU60.33 2x3L

### Description

Collection jars with measurement lines.  
Wastes are easily disposed of due to liners form.  
Includes 100 liners free of charge that comes with the product







- **Maintenance free**

Oil free vacuum pump does not require maintenance

- Easy to clean, robust body design which is compatible with hospital cleaning and disinfection system



A medical portable suction unit with a white main body and blue accents. It features a large clear collection canister with a blue lid and measurement markings (1500, 2000). A white suction tube is connected to the top. The unit has a blue handle and a control knob with a pressure gauge. The brand name 'INSPI TAL' is visible on the front.

## ■ Rapid Solution

Inspital medical Portable Suction Units can be carried and operated easily due to practical design.

Designed to be used in small operations and emergencies. Portable design suitable for rapid interventions.

## Portable Suction Units

Model SU60.06

Mobile 220 VAC

Model SU60.06T

Mobile 220 VAC, with stand

Model SU60.08

Mobile, with battery 12 V

### Dimensions

310x450x180 H mm

### Features

- Designed to be used in small operations and emergencies
- Portable design suitable for emergency response
- Battery system for 30 minutes continuous usage (SU60.08)

### Materials

- Main material of Inspital portable suction unit's body manufactured from ABS plastic and aluminium ring for vacuum gauge. Liquid collection jar is made of polycarbonate.

### Configuration

- Silicone Hose
- Liquid Collection Jars
- Stainless Carrier Pole
- Easy to Move Roller Base
- Catheter Jar
- On / Off Button
- Vacuum Gauge
- Vacuum Level Adjustment Knob
- Locking Clip

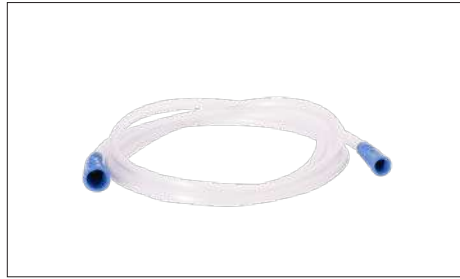


## ACCESSORIES

**Rail Attachment**

- For 25 x 5 mm Rail

Model AT20.37

**Yankauer Tipped Hose**

- 1.8 Meter Hose

Model AT20.40

**Suction Liner Probe**

Model AT20.78 With Manometer

Model AT20.79 Without Manometer

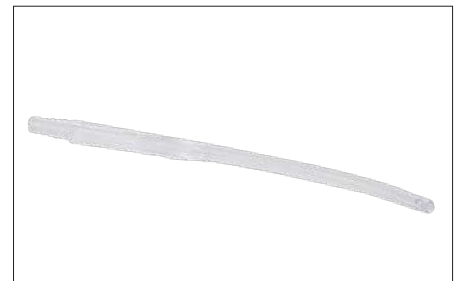
**Wall Attachment**

- For 25 x 5 mm Rail

Model AT20.50

**Vacuum Control Connector**

Model AT20.54

**Suction Cannula, Plastic**

- Non-Sterile

Model AT20.55

**Tube Connector**

- Non-Sterile

Model AT20.52

**Kapkon Connector**

Model AT20.53

**Silicone / PVC Tube**

- 8 x 12 mm (PVC) AT20.44
- 10 x 14 mm (PVC) AT20.45
- 8 x 14 mm (silicone) AT20.47
- 6 x 11 mm (silicone) AT20.46

**Cannula Set**

- Cannula Set, 5 pcs

Model SU95.30

**Silicone Birth Cups**

- Silicone Birth Cup, 50 mm SU95.10
- Silicone Birth Cup, 60 mm SU95.15
- Silicone Birth Cup, 70 mm SU95.20

## Manual Suction Unit

### Model SU60.02

#### Dimensions

190x205x385 H mm

#### Features

A practical device suitable for manual use in case of emergencies without any electrical connection.

#### Configuration

- Effective and high performance
- Durable Main Body
- Designed to be used for suctioning fluids in urgent cases.
- Can be applied on adults and pediatrics.

#### Technical Specifications

- |                           |                 |
|---------------------------|-----------------|
| • Max. Vacuum Power       | : 450 mmHg      |
| • Collecting Jar Capacity | : 250 ml        |
| • Dimensions (WxLxH)      | : 280x195x65 mm |
| • Weight                  | : 346 gr        |



# INSPI:TAL

“:innovation for hosp:ital”

INSPI:TAL MEDICAL  
TECHNOLOGY GmbH  
Kaiserswerther Str. 83B  
40878 Ratingen / GERMANY  
+49 (2102) 939 46 94  
info@inspital.com  
www.inspital.com



Website



Youtube



Linkedin



Instagram

KT-01-IN-ME / 04.23/03

All information in this document is subject change without prior notice. No parts of this document may be reproduced or transmitted in any form by any means without the express written permission of the manufacturer. All brand name and product names in this document are trademarks or registered trademarks of INSPI:TAL.